


- PROPOSED CAMPUS FOOD CART LOCATIONS**
1. Eagle Heights Community Center
  2. Lot 131
  3. UW Medical Foundation Centennial Building
  4. Nursing/Pharmacy
  5. WARF
  6. Allen Centennial Garden
  7. Microbial Science
  8. College of Engineering
  9. Henry Mall & Lot 20
  10. Union South
  11. Sellery Hall
  12. Witte Hall
  13. Art Lofts

Refer to City of Madison  
State Street Vending Area  
Map (Feb. 2015)

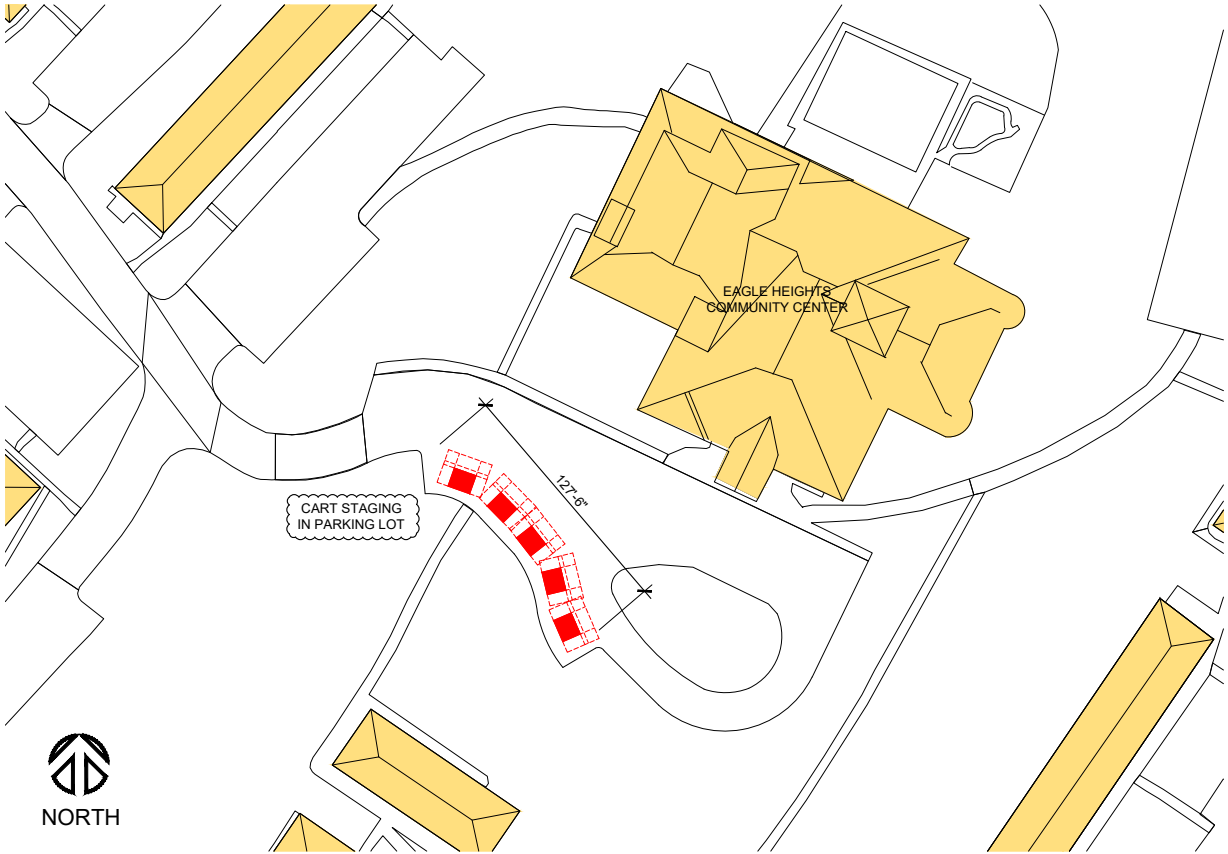
Refer to City of Madison  
Southeast Campus Vending  
Area Map (Feb. 2015)

**CAMPUS MAP - KEY**  
FOOD CART LOCATIONS

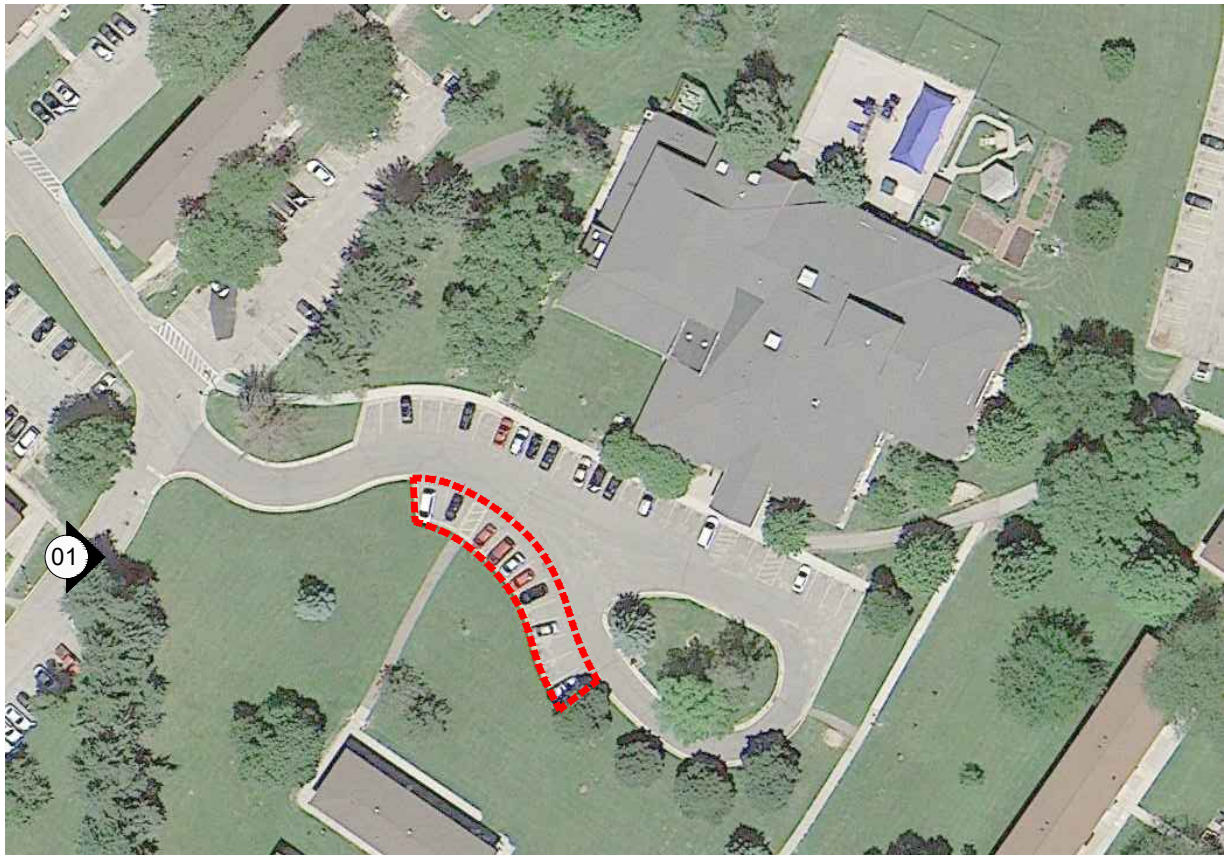
SCALE (11x17) 1" = 800'

	Project:	<b>FOOD CART LOCATIONS</b>		Designed By:	08-22-2022
	Drawing Title:	Key Map		Drawn By:	AJW
	Building No.:	NA		O.S.M.:	Scale
	File:	P:\COMMON\PLANNING\FoodCarts		Revision:	Sheet:
	FACILITIES PLANNING AND MANAGEMENT Campus Planning & Landscape Architecture		21 N. Park Street 6th Floor Madison, Wisconsin 53715-1211		<b>L-00</b>





Oblique View



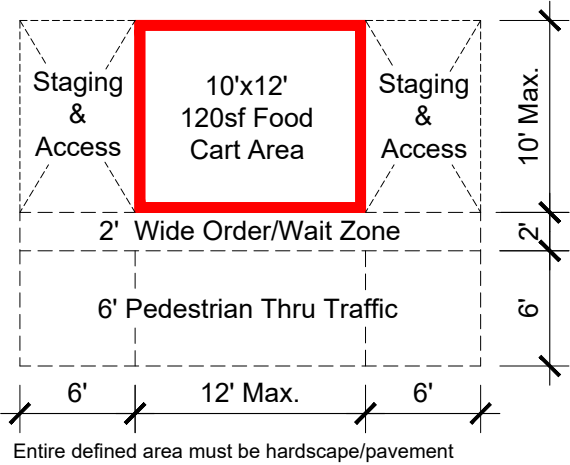
EAGLE HEIGHTS COMMUNITY CENTER  
FOOD CART LOCATIONS  
SCALE 1" = 100'


**NOTES:**  
Refer to Food Cart Locations Key (Sheet L-00) for campus location and context.

Refer to UW-Madison Food Cart Policy (XXX.XX) for the following information:

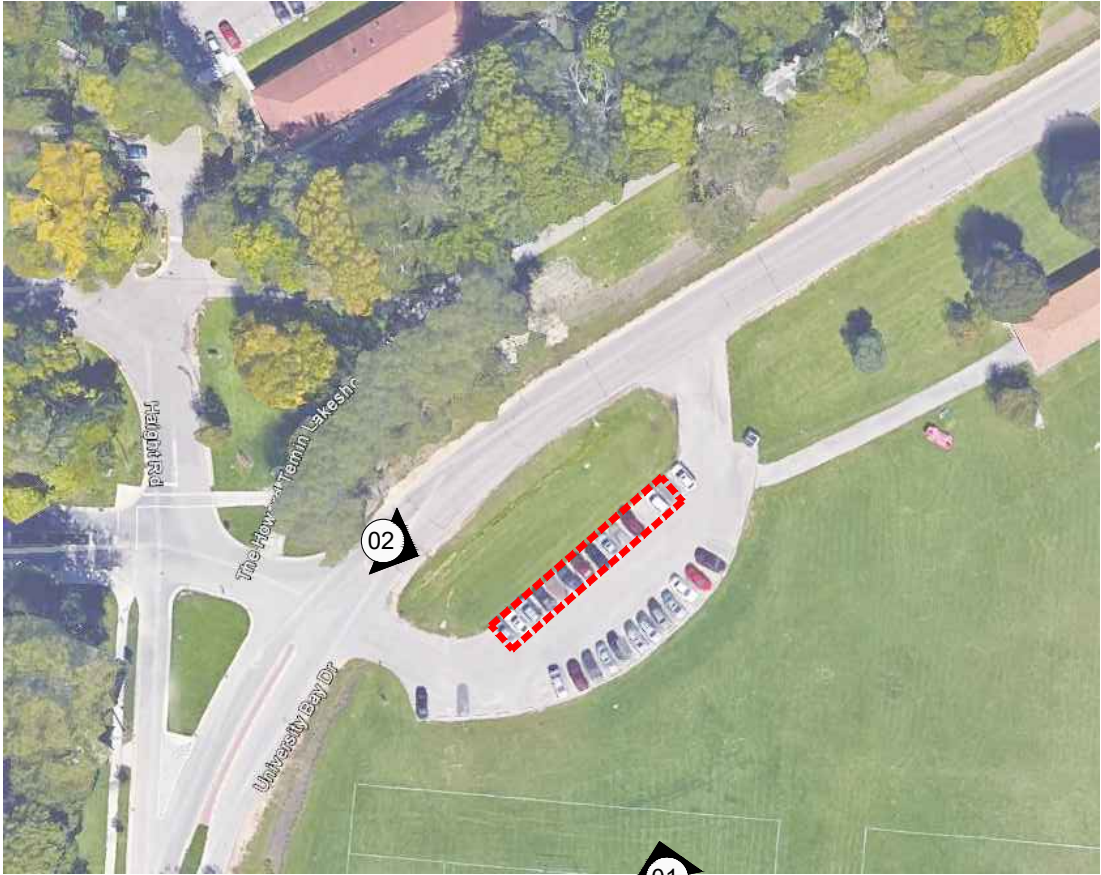
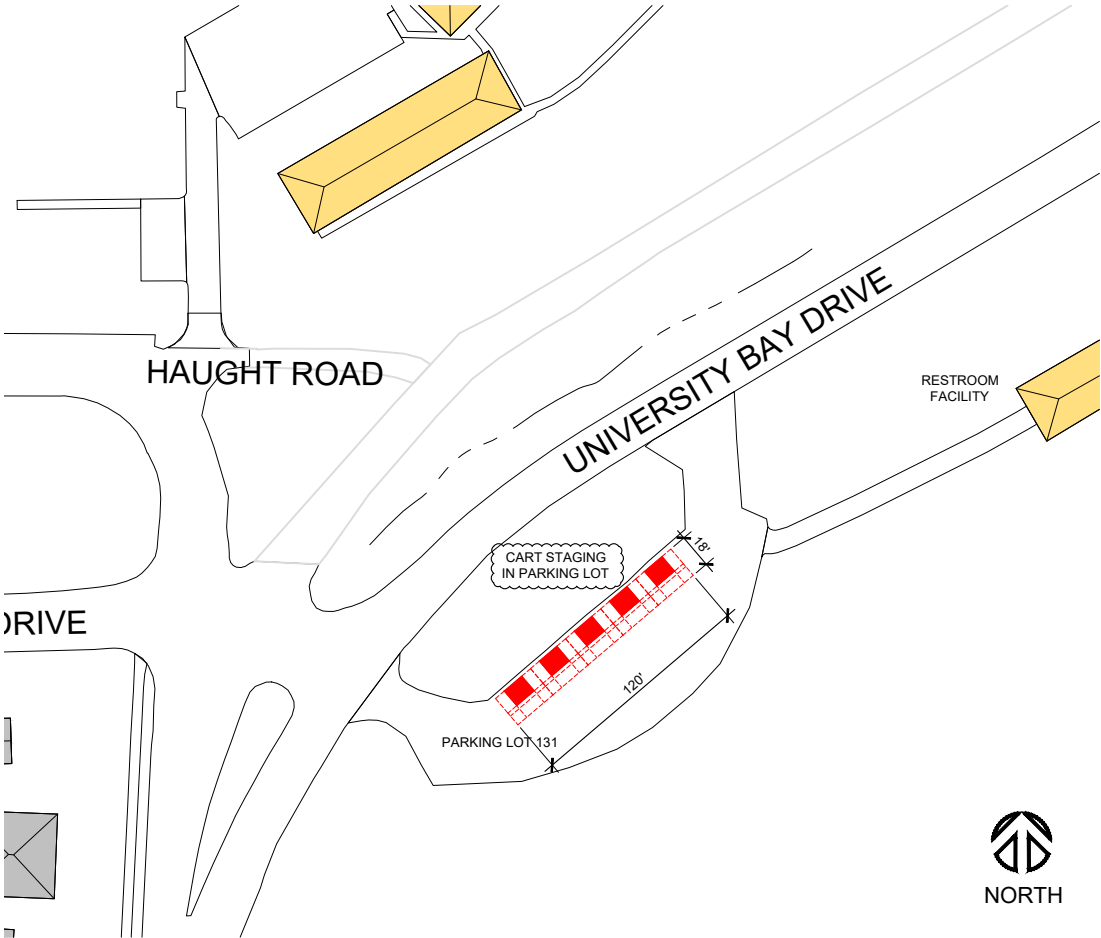
- Accepted date
- General guidelines
- Dimensional requirements
- Approved locations for special events
- Intake and approval process

**TYPICAL DIMENSIONS**



	Project:	<b>FOOD CART LOCATIONS</b>		Designed By:	AJW	Date:	08-22-2022
	Drawing Title:	Eagle Heights		Drawn By:		Scale:	Scale
	Building No.:	NA		O.S.M.:	21 N. Park Street 6th Floor Madison, Wisconsin 53715-1211	Sheet:	L-1
	File:	P:\COMMON\PLANNING\FoodCarts		Revision:	Date:		
				rev_0 05-30-19	rev_3 08-21-22		



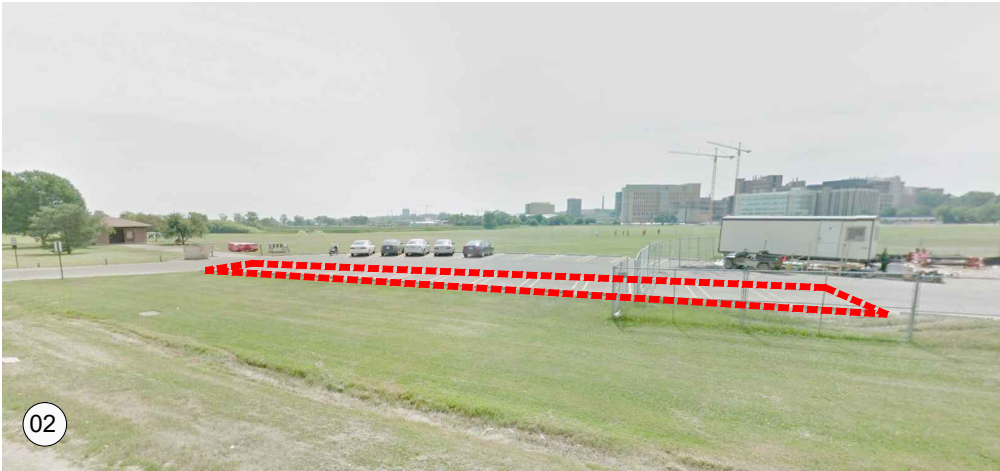


LOT 131  
FOOD CART LOCATIONS

SCALE 1" = 100'



Oblique View



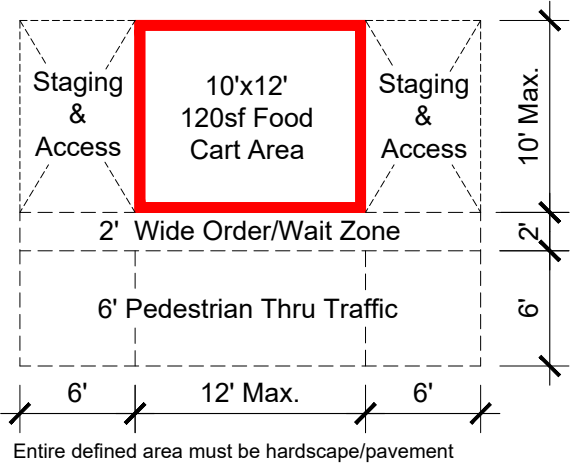
Eye Level View: Southeast View along University Bay Drive


**NOTES:**  
Refer to Food Cart Locations Key (Sheet L-00) for campus location and context.

Refer to UW-Madison Food Cart Policy (XXX.XX) for the following information:

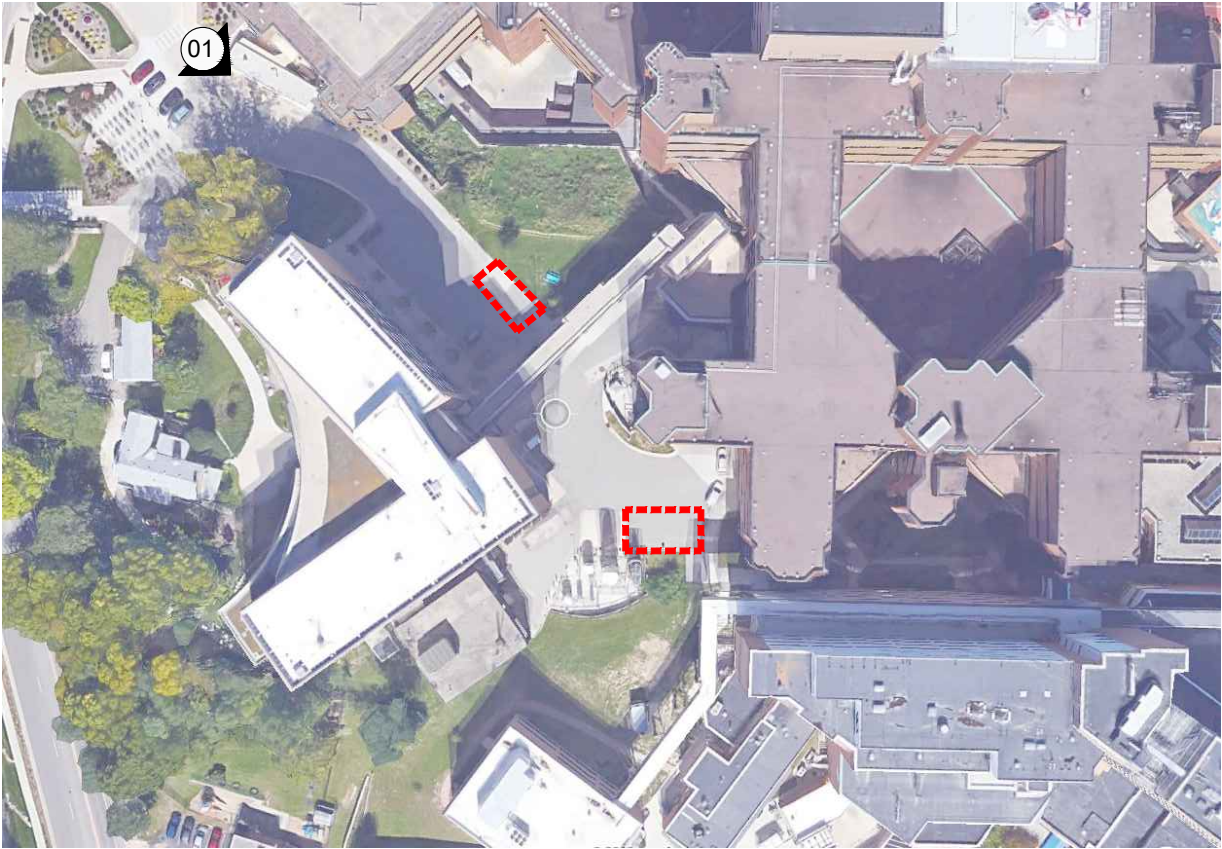
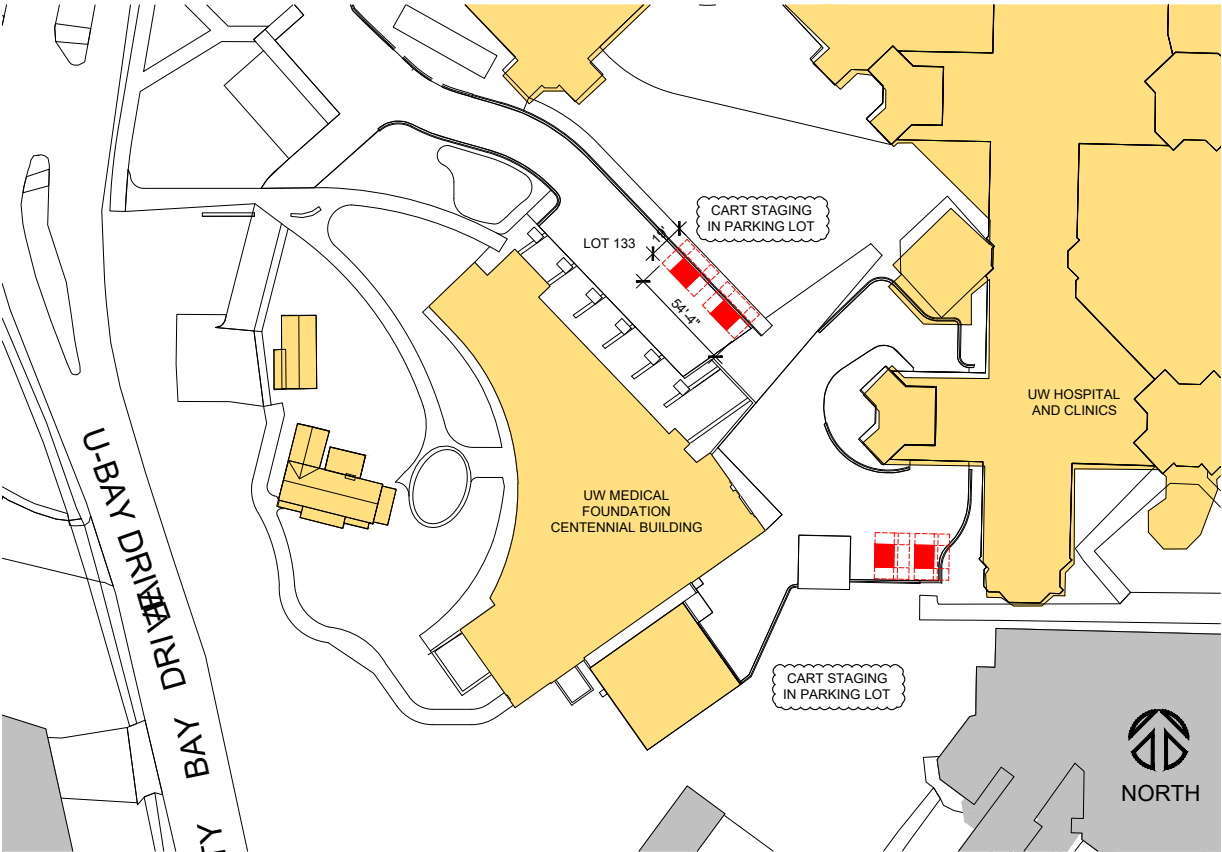
- Accepted date
- General guidelines
- Dimensional requirements
- Approved locations for special events
- Intake and approval process

**TYPICAL DIMENSIONS**



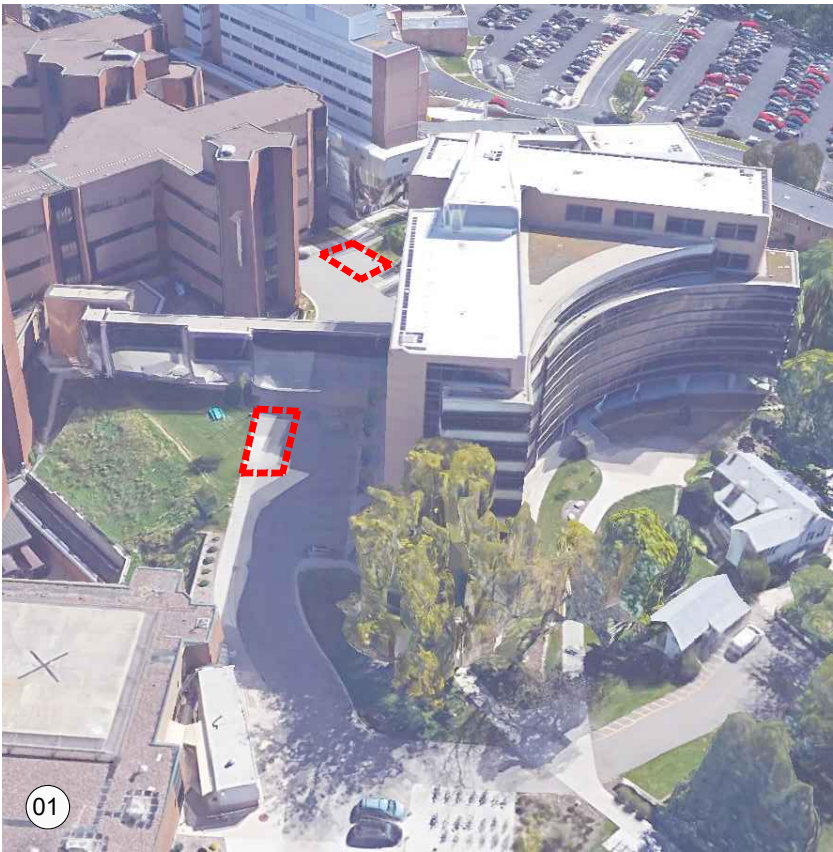
 <b>WISCONSIN</b> <b>UNIVERSITY OF WISCONSIN-MADISON</b>	Project:	<b>FOOD CART LOCATIONS</b>		Designed By:		Date:	08-22-2022
				Drawn By:		AJW	Scale:
	Drawing Title:	Lot 131		O.S.M.:		Scale	
	Building No.:	NA		Revision:	Date:	Sheet:	
	File:	P:\COMMON\PLANNING\FoodCarts		rev_0 05-30-19	rev_3 08-21-22	<b>L-2</b>	
				rev_1 07-12-21			
	FACILITIES PLANNING AND MANAGEMENT Campus Planning & Landscape Architecture		21 N. Park Street 6th Floor Madison, Wisconsin 53715-1211				





01 UW FOUNDATION CENTENNIAL BUILDING  
FOOD CART LOCATIONS

SCALE 1" = 100'



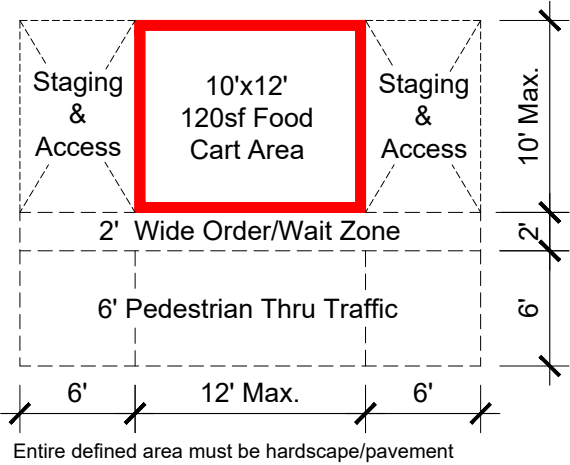
Oblique View


**NOTES:**  
Refer to Food Cart Locations Key (Sheet L-00) for campus location and context.

Refer to UW-Madison Food Cart Policy (XXX.XX) for the following information:

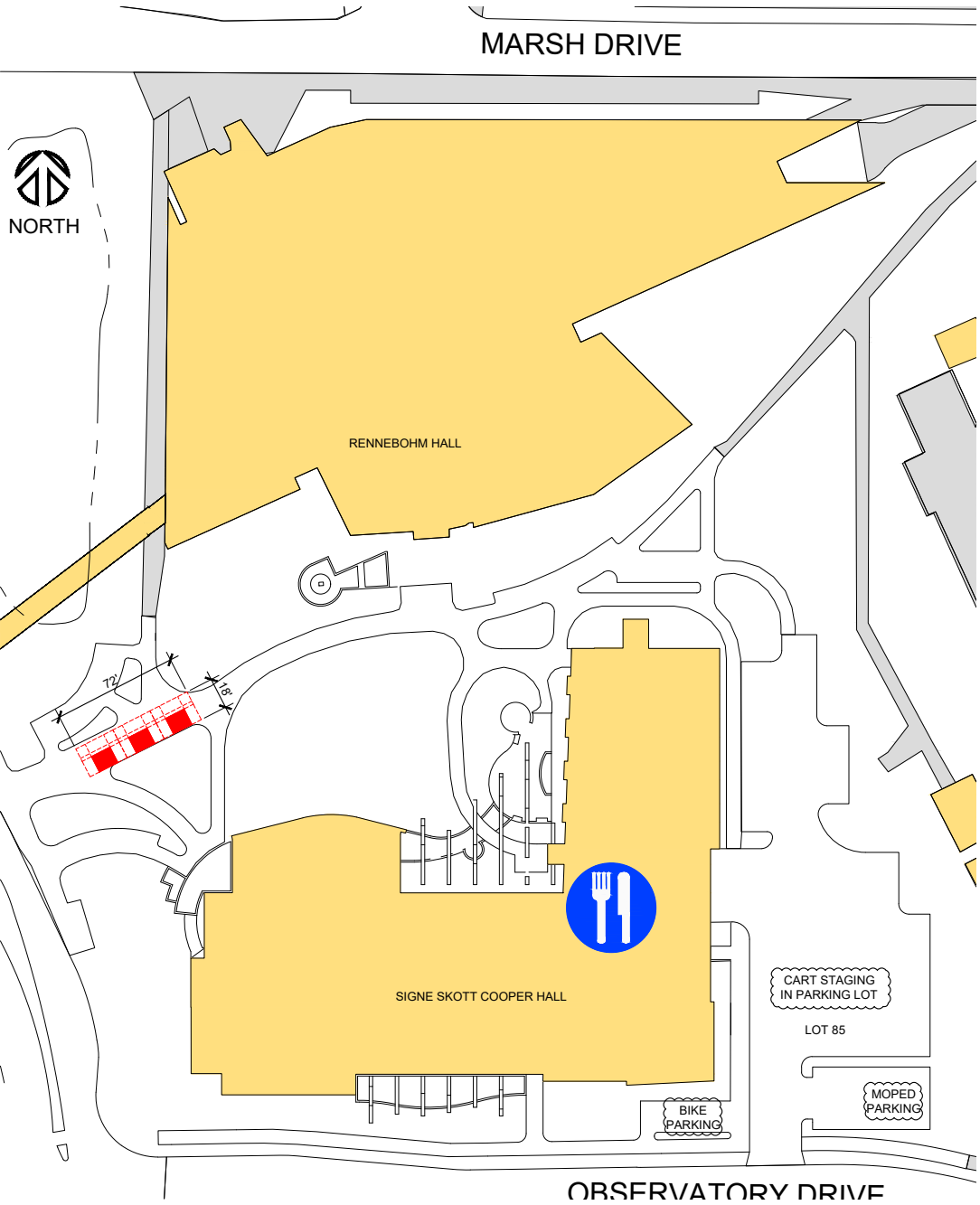
- Accepted date
- General guidelines
- Dimensional requirements
- Approved locations for special events
- Intake and approval process

**TYPICAL DIMENSIONS**



 <b>WISCONSIN</b> <b>UNIVERSITY OF WISCONSIN-MADISON</b>	Project:	<b>FOOD CART LOCATIONS</b>		Designed By:		Date:	08-22-2022
				Drawn By:		AJW	Scale:
	Drawing Title:	UW Centennial Bldg.		O.S.M.:		Scale	
	Building No.:	NA		Revision:	Date:	Sheet:	
	File:	P:\COMMON\PLANNING\FoodCarts		rev_0 05-30-19	rev_3 08-21-22	L-3	
			rev_1 07-12-21				
	FACILITIES PLANNING AND MANAGEMENT Campus Planning & Landscape Architecture		21 N. Park Street 6th Floor Madison, Wisconsin 53715-1211				





 NURSING  
FOOD CART LOCATIONS

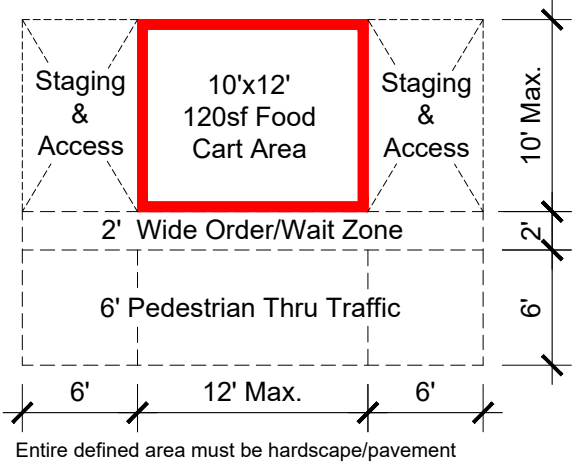
SCALE 1" = 100'

**NOTES:**  
Refer to Food Cart Locations Key (Sheet L-00) for campus location and context.

Refer to UW-Madison Food Cart Policy (XXX.XX) for the following information:

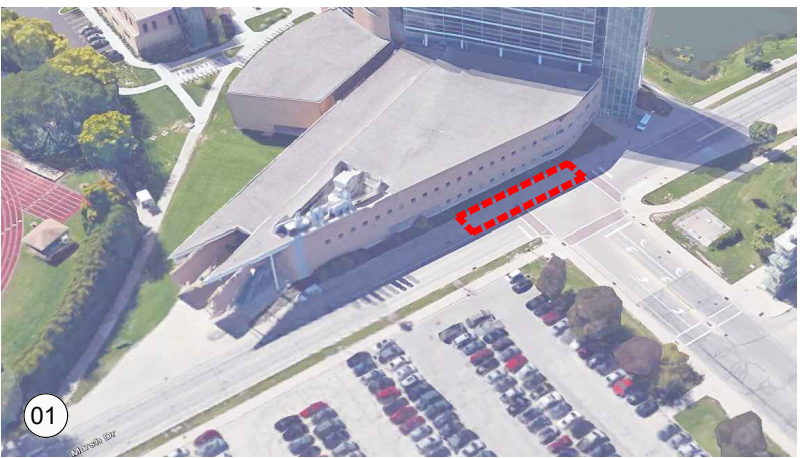
- Accepted date
- General guidelines
- Dimensional requirements
- Approved locations for special events
- Intake and approval process

**TYPICAL DIMENSIONS**



02

Plan View



01

Oblique View



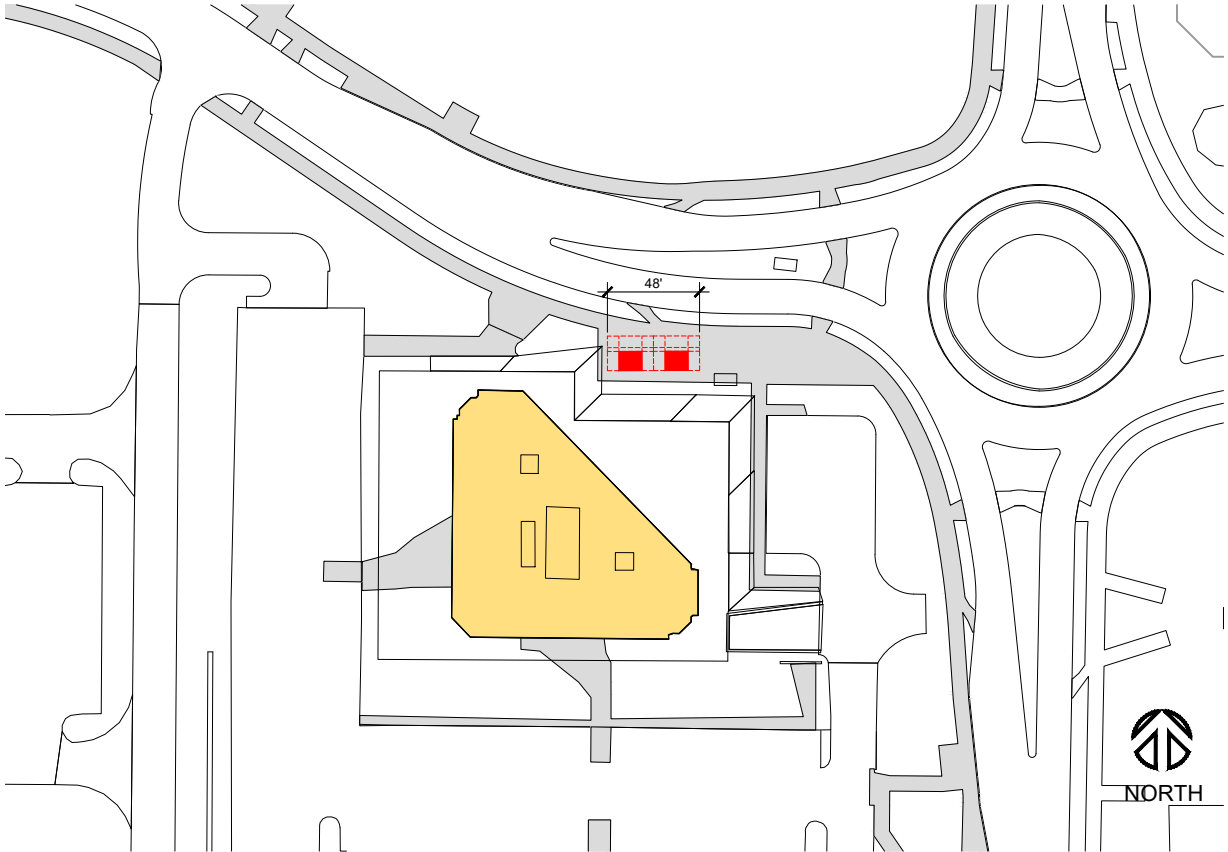
02

Oblique View



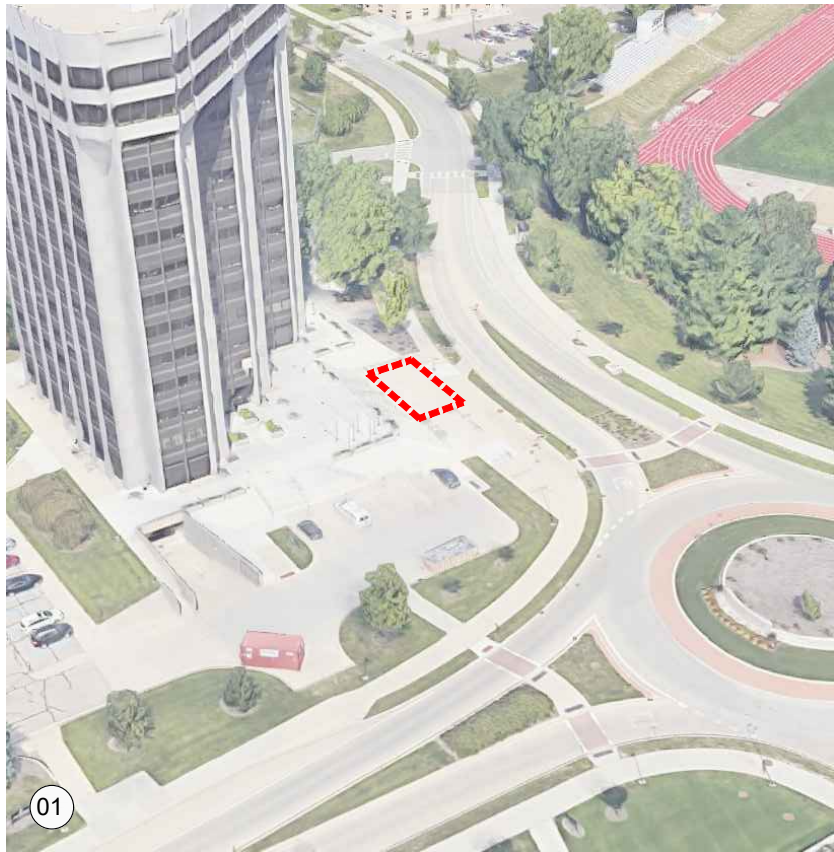
Project: <b>FOOD CART LOCATIONS</b>	Designed By:		Date: 08-22-2022
	Drawn By: AJW		Scale:
Drawing Title: Nursing & Pharmacy	O.S.M.:		Scale
Building No.: NA	Revision:	Date:	Sheet:
File: P:\COMMON\PLANNING\FoodCarts	rev_0 05-30-19	rev_3 08-21-22	L-4
	rev_1 07-12-21		
FACILITIES PLANNING AND MANAGEMENT Campus Planning & Landscape Architecture	21 N. Park Street 6th Floor Madison, Wisconsin 53715-1211		





WARF BUILDING  
FOOD CART LOCATIONS

SCALE 1" = 100'



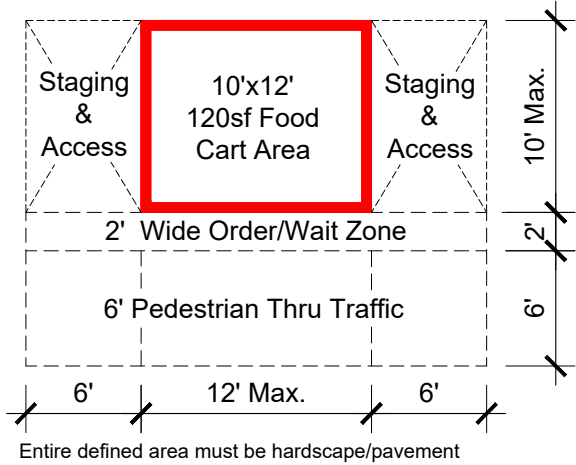
Oblique View


**NOTES:**  
Refer to Food Cart Locations Key (Sheet L-00) for campus location and context.

Refer to UW-Madison Food Cart Policy (XXX.XX) for the following information:

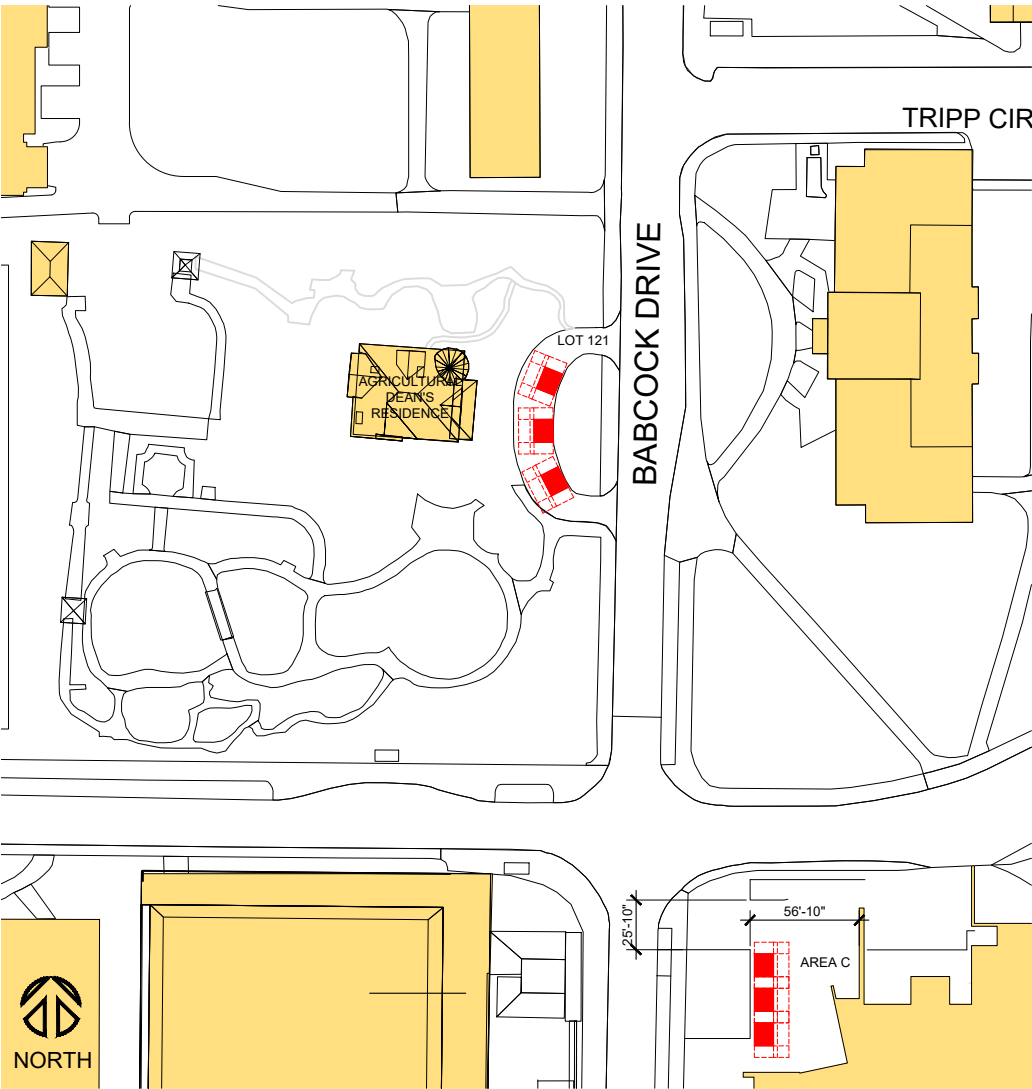
- Accepted date
- General guidelines
- Dimensional requirements
- Approved locations for special events
- Intake and approval process

**TYPICAL DIMENSIONS**



 <b>WISCONSIN</b> UNIVERSITY OF WISCONSIN-MADISON	Project:	<b>FOOD CART LOCATIONS</b>		Designed By:	Date: 08-22-2022	
	Drawing Title:	WARF Building		Drawn By:	AJW	
	Building No.:	0039		O.S.M.:	Scale:	
	File:	P:\COMMON\PLANNING\FoodCarts		Revision:	Date:	Sheet: <b>L-5</b>
				rev_0 05-30-19	rev_3 08-21-22	
				rev_1 07-12-21	21 N. Park Street 6th Floor Madison, Wisconsin 53715-1211	





ALLEN CENTENNIAL GARDEN  
FOOD CART LOCATIONS

SCALE 1" = 100'



Plan View



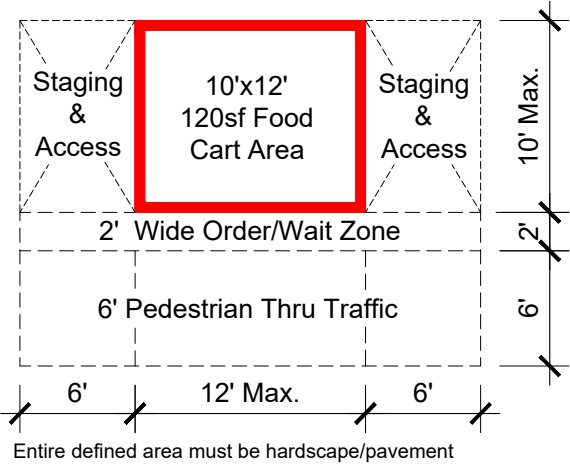
Oblique View


**NOTES:**  
Refer to Food Cart Locations Key (Sheet L-00) for campus location and context.

Refer to UW-Madison Food Cart Policy (XXX.XX) for the following information:

- Accepted date
- General guidelines
- Dimensional requirements
- Approved locations for special events
- Intake and approval process

**TYPICAL DIMENSIONS**

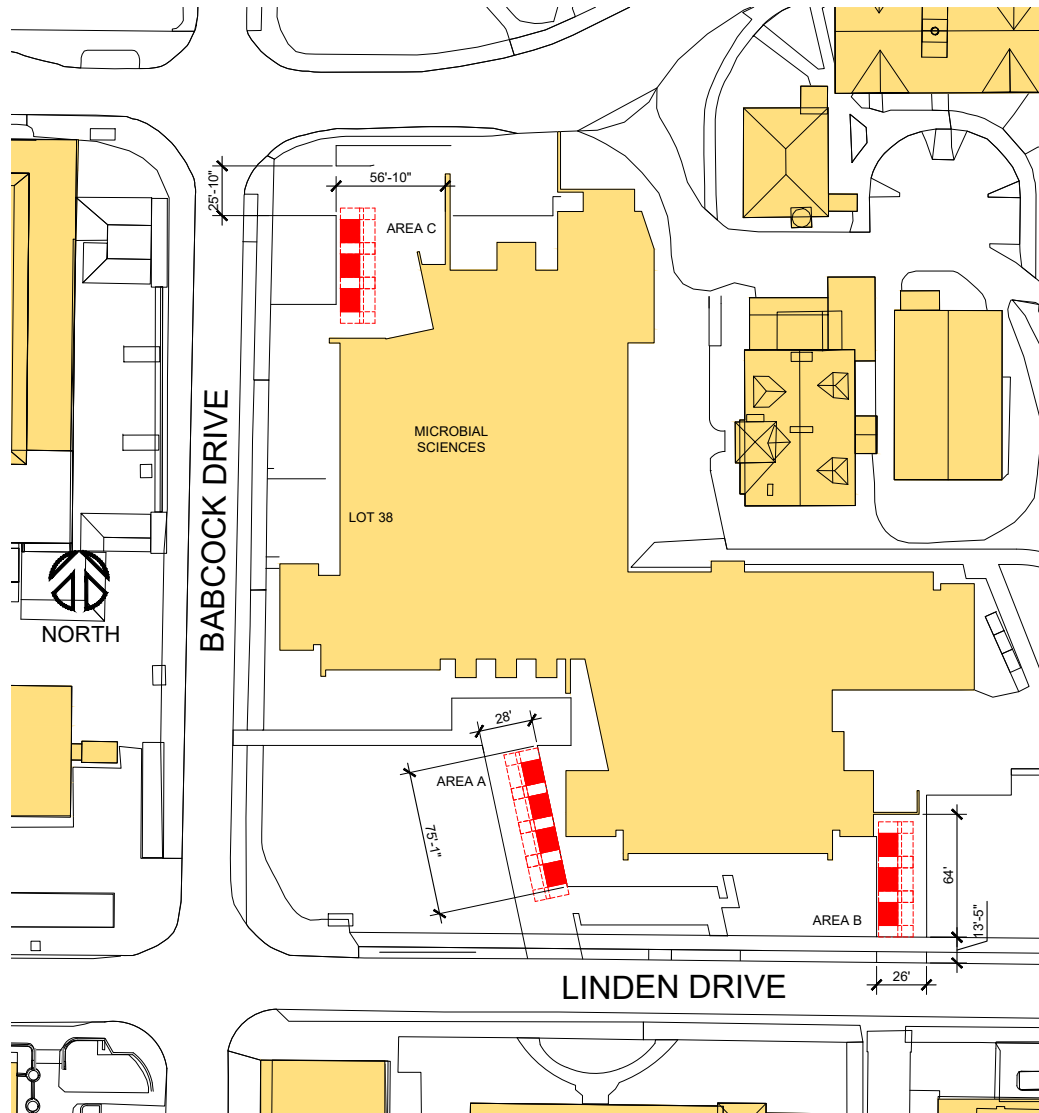


	Project:	<b>FOOD CART LOCATIONS</b>		Designed By:	Date: 08-22-2022
	Drawing Title:	Allen Centennial Garden		Drawn By: AJW	Scale:
	Building No.:	0072		O.S.M.:	Scale
	File:	P:\COMMON\PLANNING\FoodCarts		Revision:	Sheet: L-6
				Date:	

rev_0 05-30-19	rev_3 08-21-22
rev_1 07-12-21	

21 N. Park Street 6th Floor Madison, Wisconsin 53715-1211
---





○ MICROBIAL/BABCOCK DR.  
FOOD CART LOCATIONS

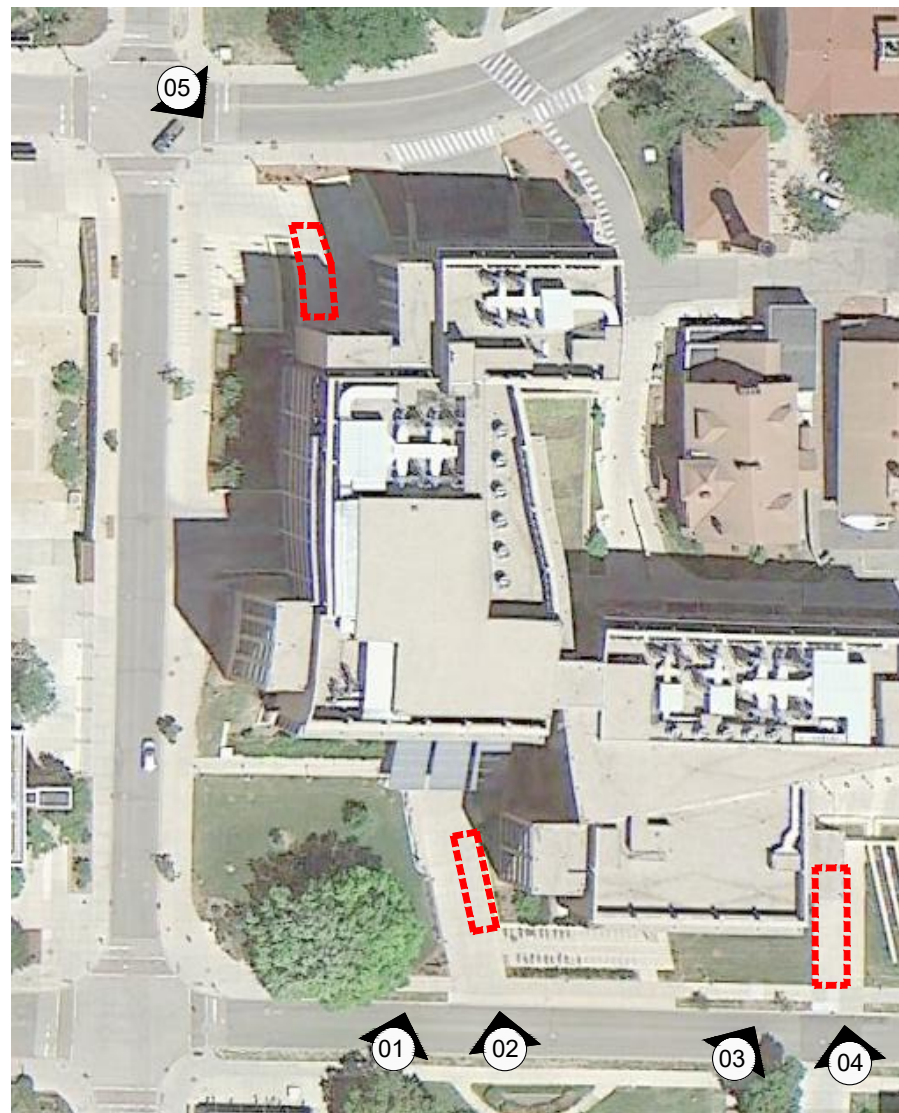
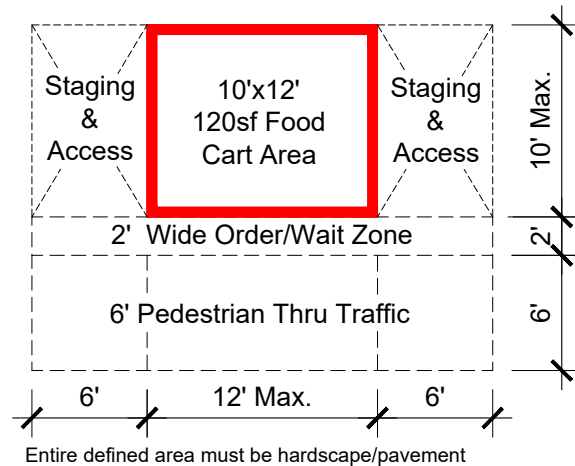
SCALE 1" = 100'

**NOTES:**  
Refer to Food Cart Locations Key (Sheet L-00)  
for campus location and context.

Refer to UW-Madison Food Cart Policy  
(XXX.XX) for the following information:

- Accepted date
- General guidelines
- Dimensional requirements
- Approved locations for special events
- Intake and approval process

#### TYPICAL DIMENSIONS



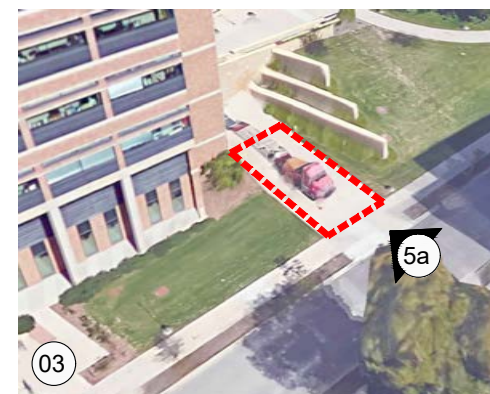
Plan View



Oblique View: AREA A



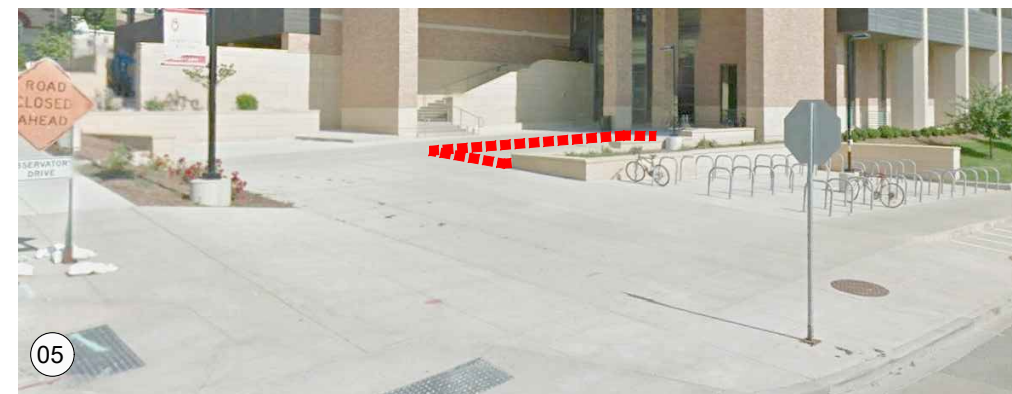
Eye Level View: AREA A



Oblique View: AREA B



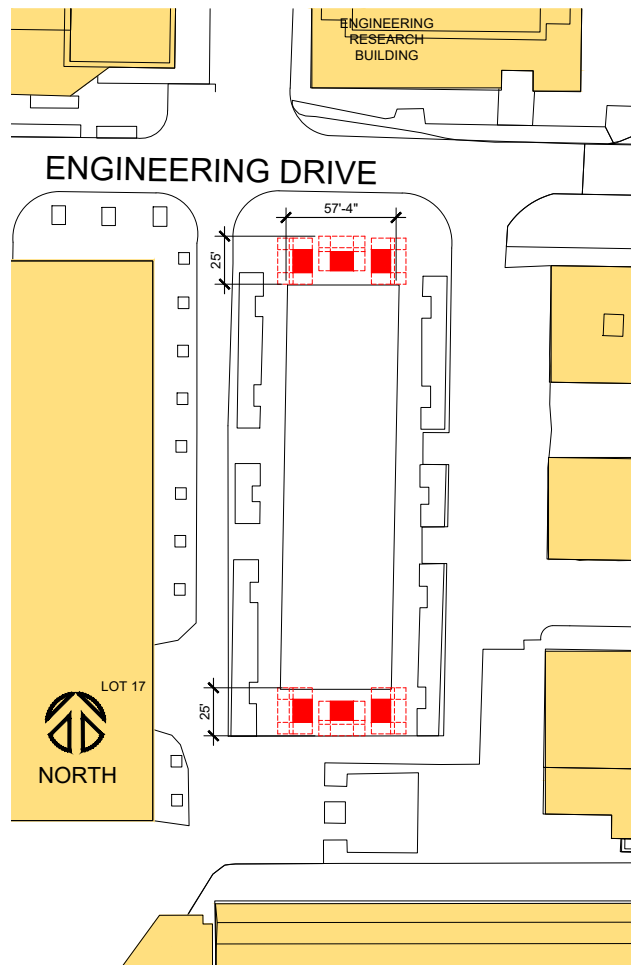
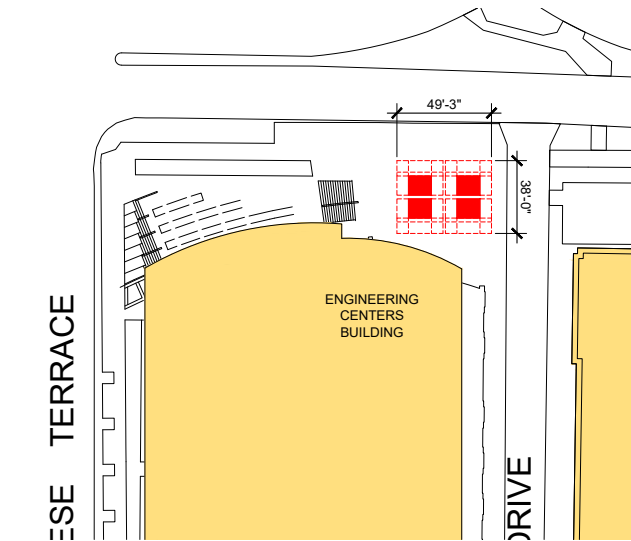
Eye Level View: AREA B



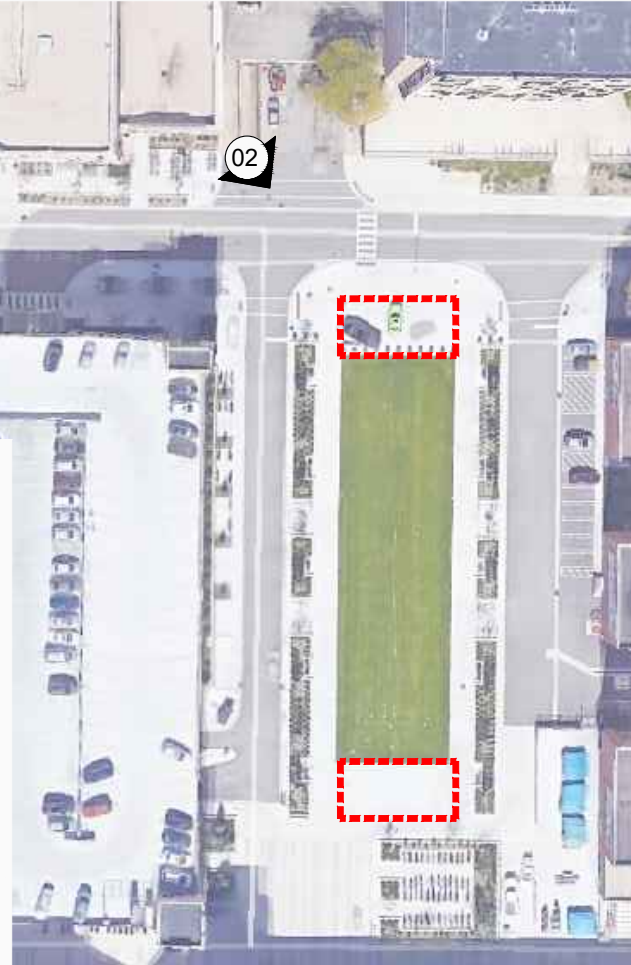
Eye Level View: AREA C

 <b>WISCONSIN</b> UNIVERSITY OF WISCONSIN-MADISON	Project:	<b>FOOD CART LOCATIONS</b>		Designed By:	Date: 08-22-2022	
				Drawn By:	AJW	
	Drawing Title:	Microbial Building		O.S.M.:		Scale
	Building No.:	0060		Revision:	Date:	
	File:	P:\COMMON\PLANNING\FoodCarts		rev_0 05-30-19	rev_3 08-21-22	
			rev_1 07-12-21			
	FACILITIES PLANNING AND MANAGEMENT Campus Planning & Landscape Architecture		21 N. Park Street 6th Floor Madison, Wisconsin 53715-1211		Sheet: <b>L-7</b>	





COLLEGE OF ENGINEERING  
FOOD CART LOCATIONS  
SCALE 1" = 100'



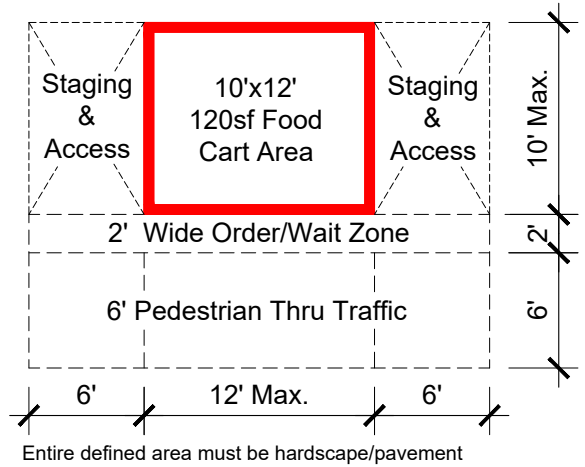
Plan View


**NOTES:**  
Refer to Food Cart Locations Key (Sheet L-00) for campus location and context.

Refer to UW-Madison Food Cart Policy (XXX.XX) for the following information:

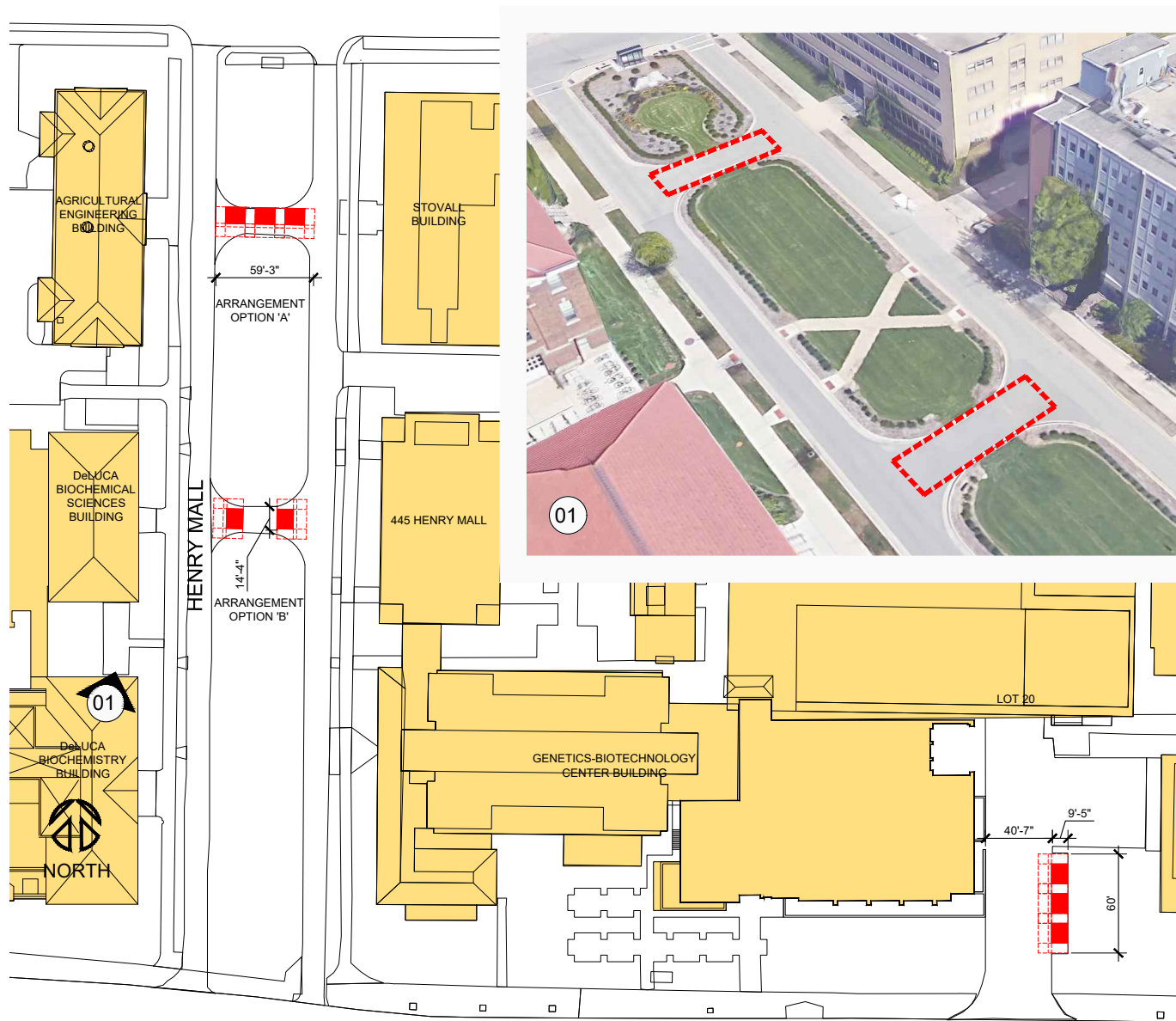
- Accepted date
- General guidelines
- Dimensional requirements
- Approved locations for special events
- Intake and approval process

**TYPICAL DIMENSIONS**



 <b>WISCONSIN</b> <b>UNIVERSITY OF WISCONSIN-MADISON</b>	Project:	<b>FOOD CART LOCATIONS</b>		Designed By:		Date:	08-22-2022
	Drawing Title:	College of Engineering		Drawn By: AJW		Scale:	
	Building No.:	NA		O.S.M.:		Scale	
	File:	P:\COMMON\PLANNING\FoodCarts		Revision:	Date:	Sheet:	
	FACILITIES PLANNING AND MANAGEMENT Campus Planning & Landscape Architecture		rev_0 05-30-19	rev_3 08-21-22	L-8		
			rev_1 07-12-21				





UNIVERSITY AVENUE

LOT 20 ENTRY  
FOOD CART LOCATIONS

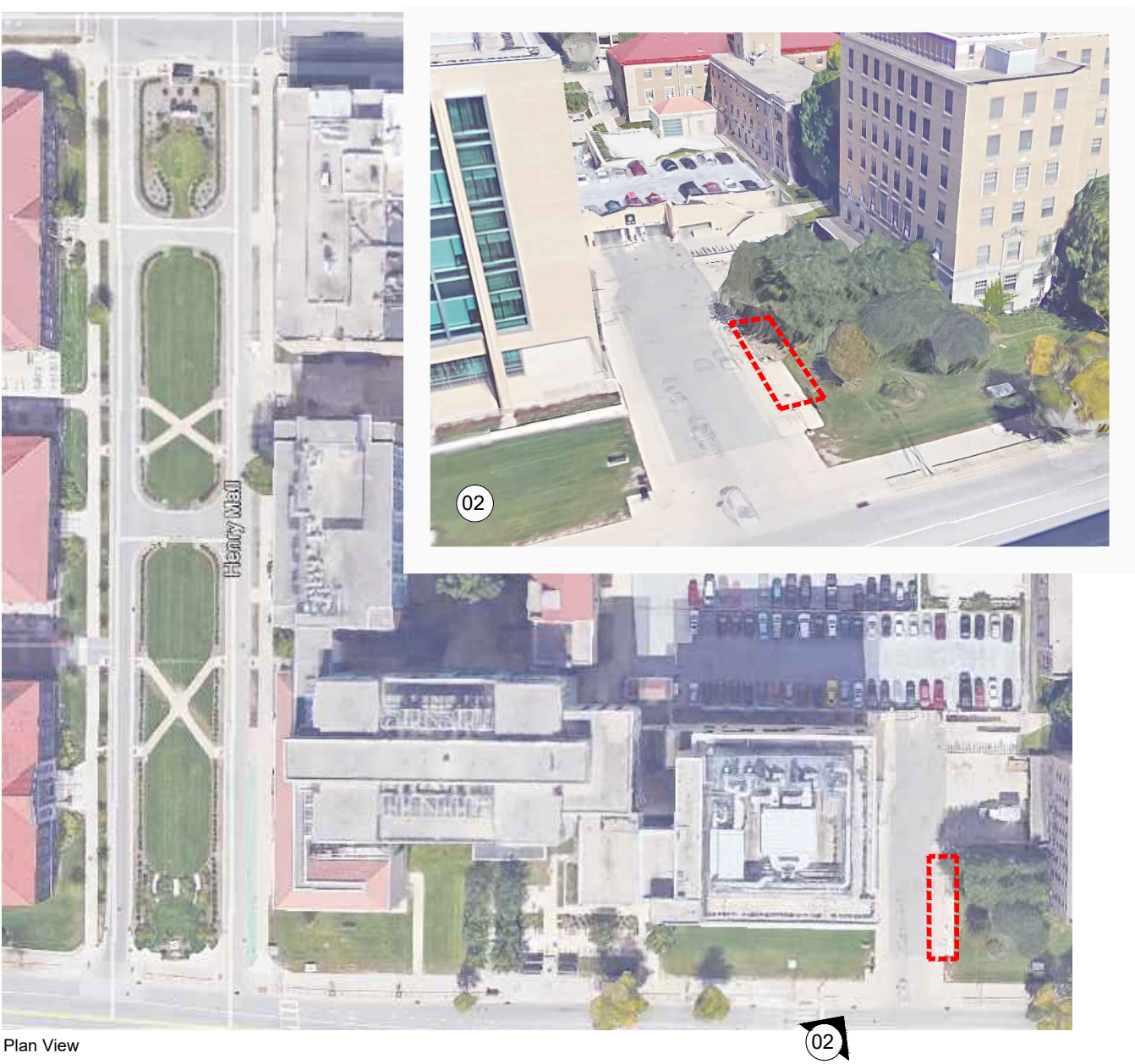
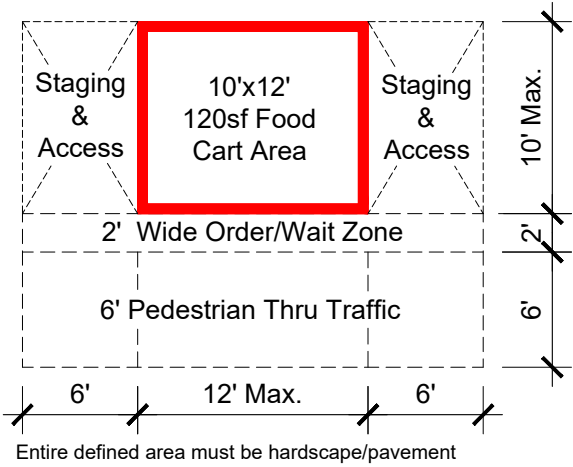
SCALE 1" = 100'

**NOTES:**  
Refer to Food Cart Locations Key (Sheet L-00)  
for campus location and context.

Refer to UW-Madison Food Cart Policy  
(XXX.XX) for the following information:

- Accepted date
- General guidelines
- Dimensional requirements
- Approved locations for special events
- Intake and approval process

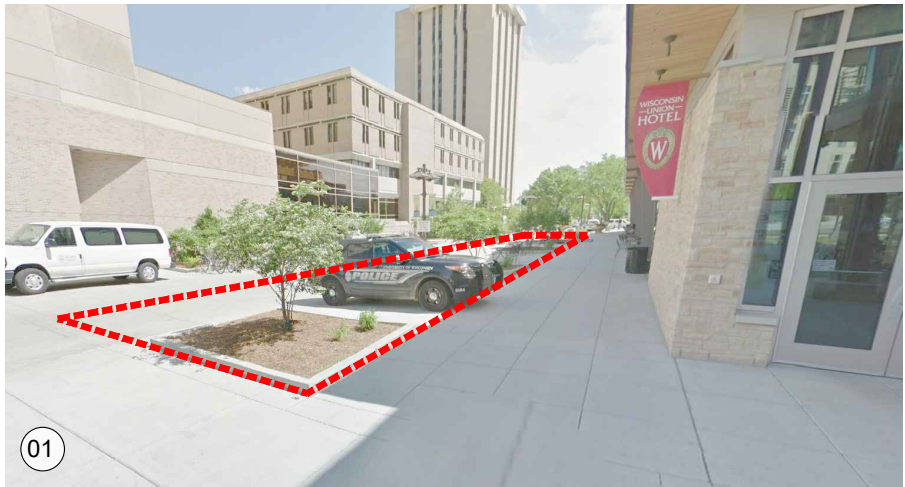
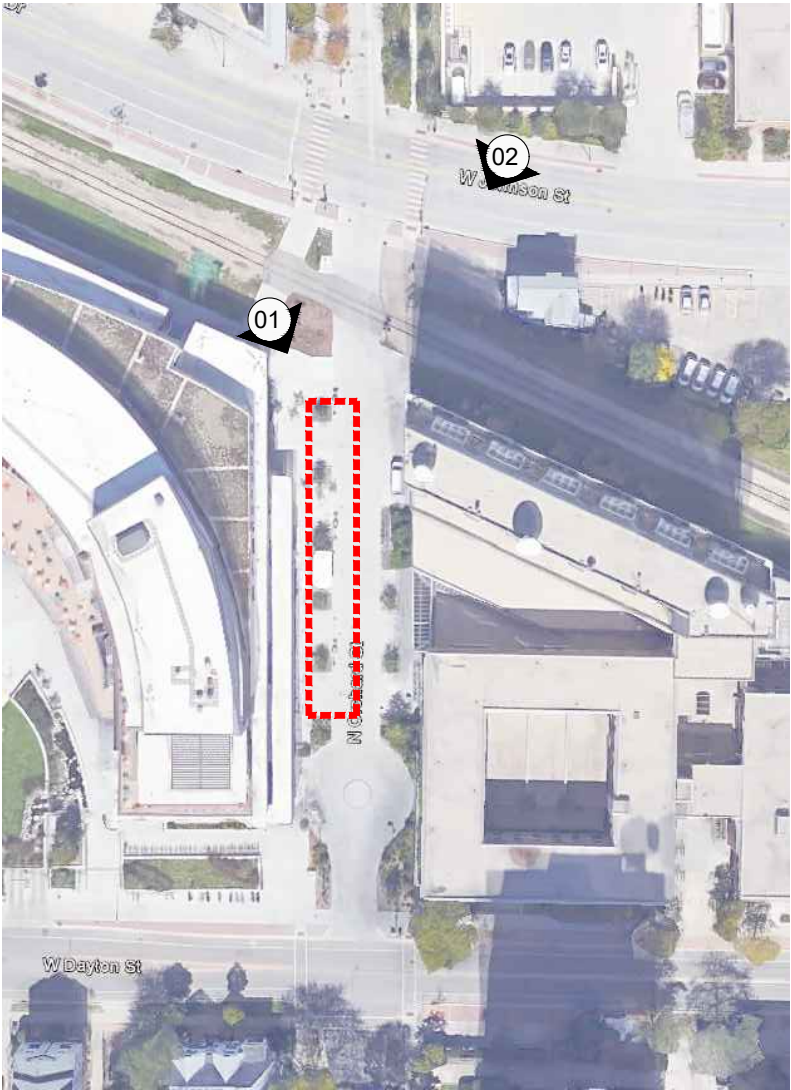
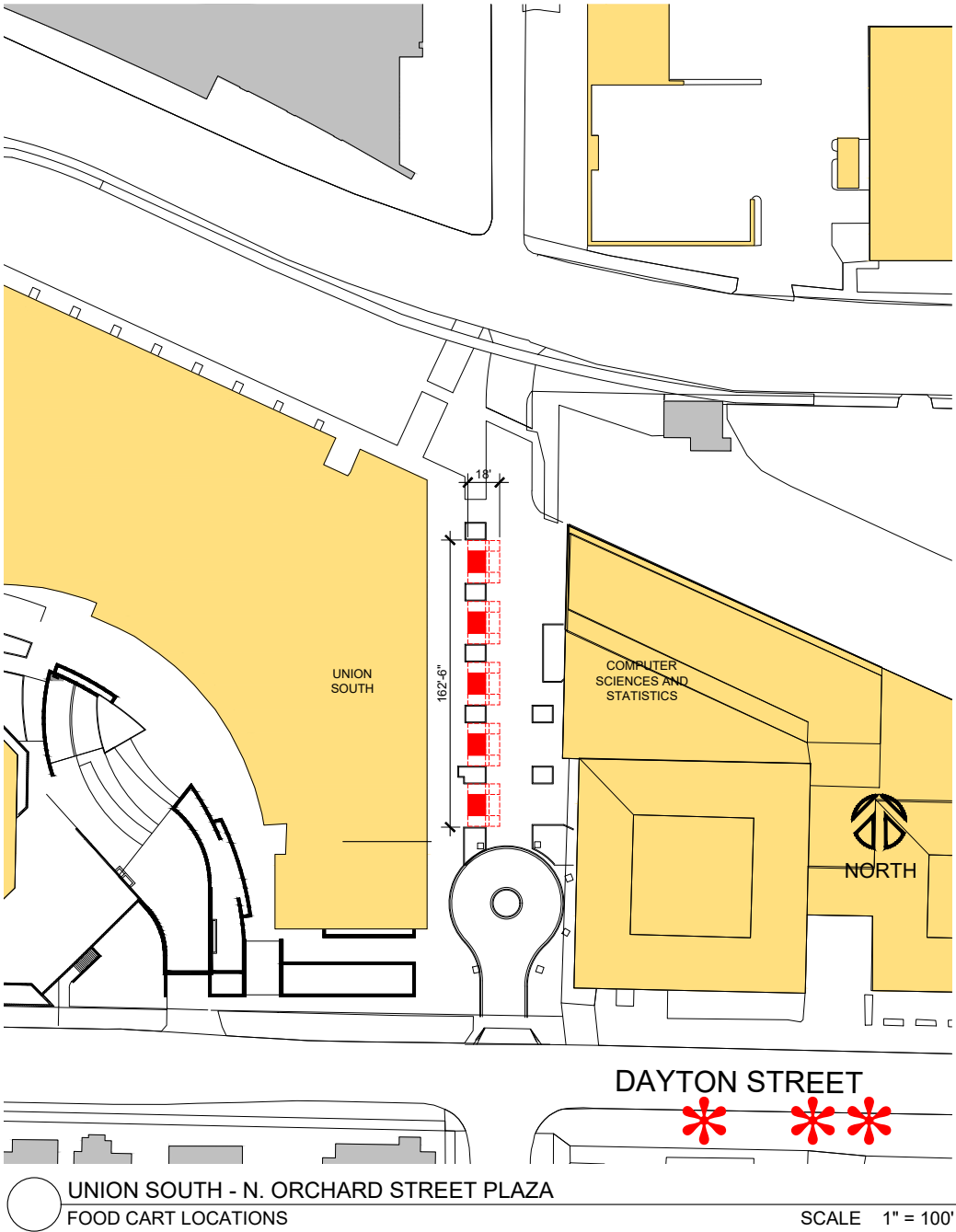
**TYPICAL DIMENSIONS**



Plan View

 <b>WISCONSIN</b> <b>UNIVERSITY OF WISCONSIN-MADISON</b>	Project:	<b>FOOD CART LOCATIONS</b>		Designed By:		Date: 08-22-2022
				Drawn By: AJW		Scale:
	Drawing Title:	Henry Mall & Lot 20 Entry		O.S.M.:		Scale
	Building No.:	NA		Revision:	Date:	Sheet:
	File:	P:\COMMON\PLANNING\FoodCarts		rev_0 05-30-19	rev_3 08-21-22	<b>L-9</b>
				rev_1 07-12-21		
	FACILITIES PLANNING AND MANAGEMENT Campus Planning & Landscape Architecture		21 N. Park Street 6th Floor Madison, Wisconsin 53715-1211			





Eye Level View: N. Orchard Street Plaza



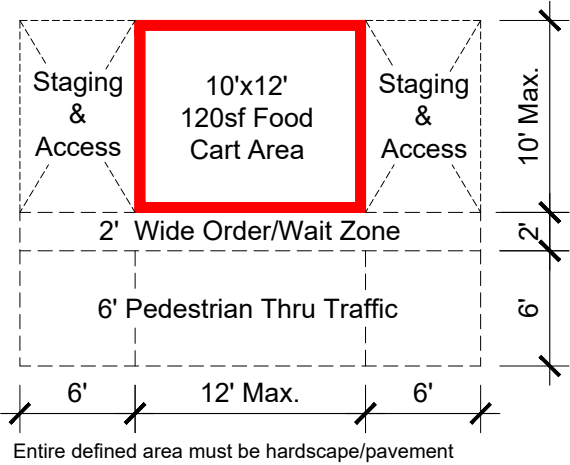
Oblique View


**NOTES:**  
Refer to Food Cart Locations Key (Sheet L-00) for campus location and context.

Refer to UW-Madison Food Cart Policy (XXX.XX) for the following information:

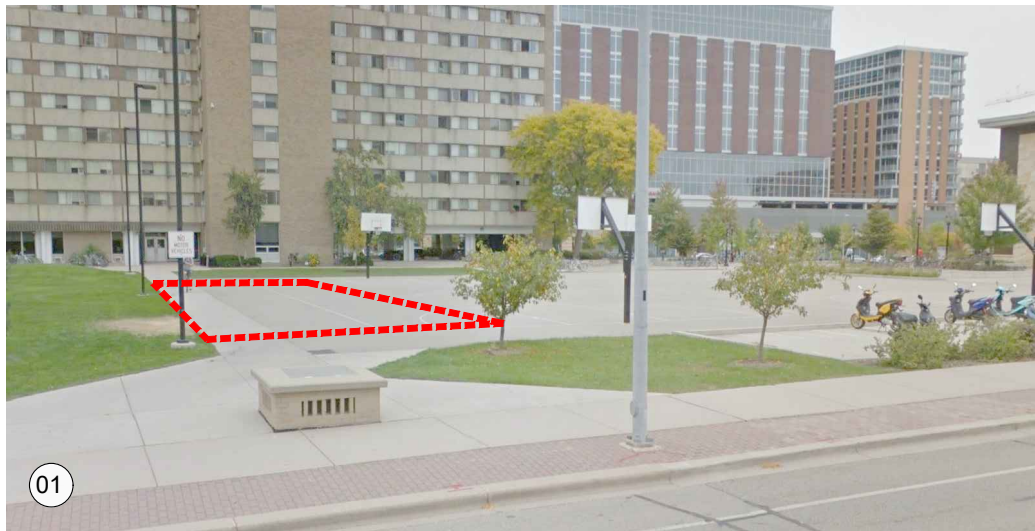
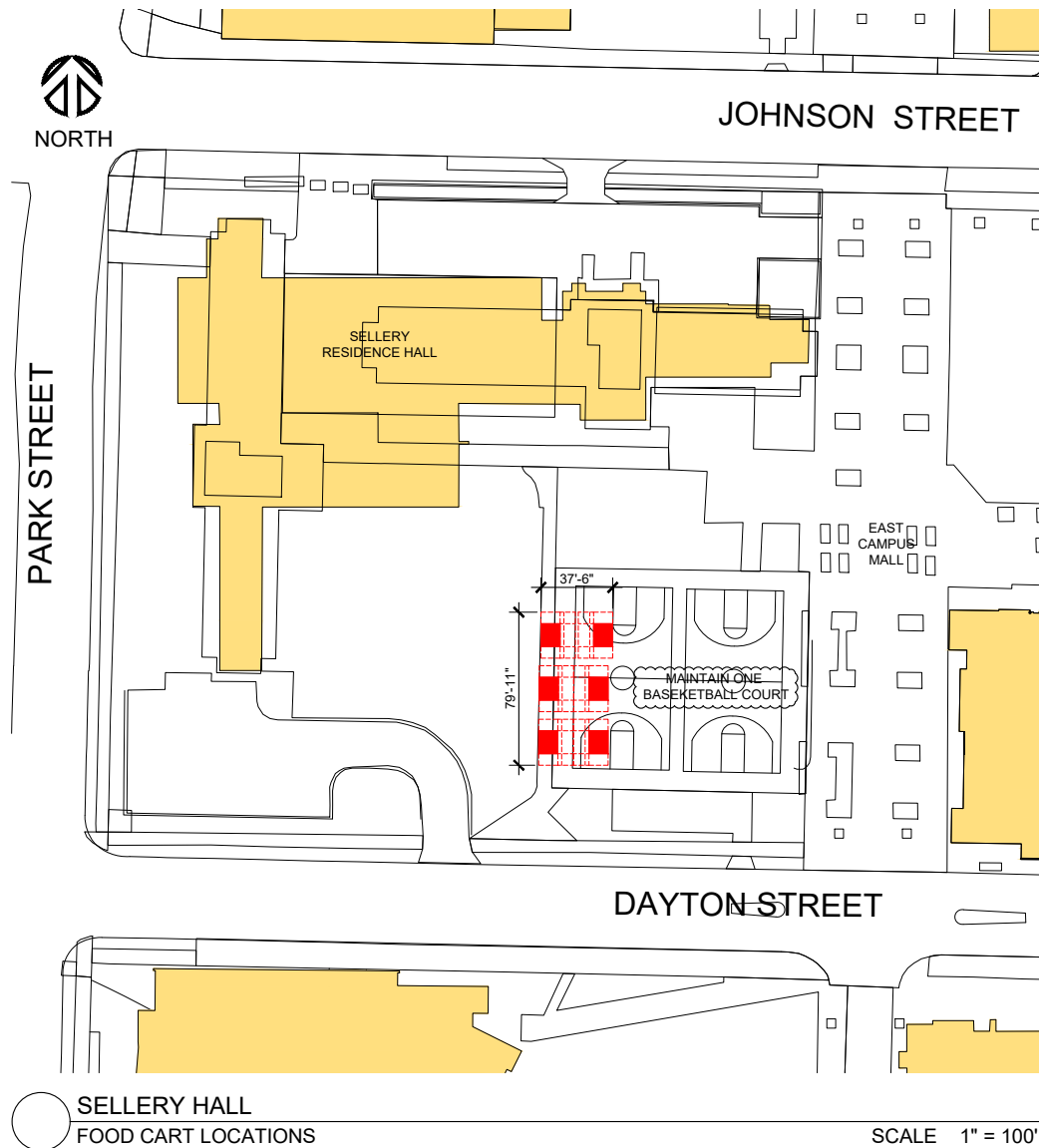
- Accepted date
- General guidelines
- Dimensional requirements
- Approved locations for special events
- Intake and approval process

**TYPICAL DIMENSIONS**



 <b>WISCONSIN</b> <b>UNIVERSITY OF WISCONSIN-MADISON</b>	Project:	<b>FOOD CART LOCATIONS</b>		Designed By:		Date: 08-22-2022
				Drawn By: AJW		Scale:
	Drawing Title: Union South			O.S.M.:		Scale
	Building No.: 0088			Revision:	Date:	Sheet:
	File: P:\COMMON\PLANNING\FoodCarts			rev_0 05-30-19	rev_3 08-21-22	<b>L-10</b>
				rev_1 07-12-21		
FACILITIES PLANNING AND MANAGEMENT Campus Planning & Landscape Architecture			21 N. Park Street 6th Floor Madison, Wisconsin 53715-1211			





Eye Level View: North along W. Dayton Street



Plan View



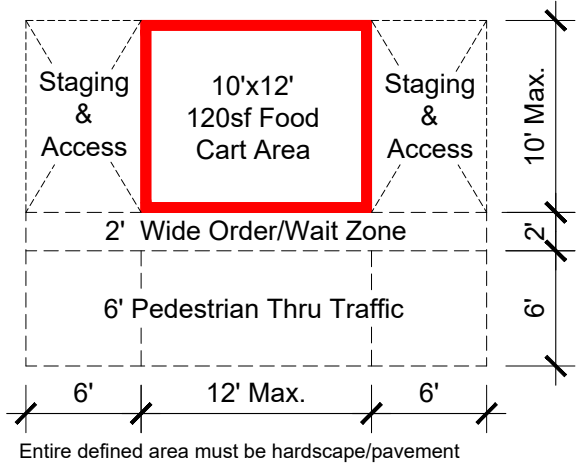
Oblique View

**NOTES:**  
Refer to Food Cart Locations Key (Sheet L-00) for campus location and context.

Refer to UW-Madison Food Cart Policy (XXX.XX) for the following information:

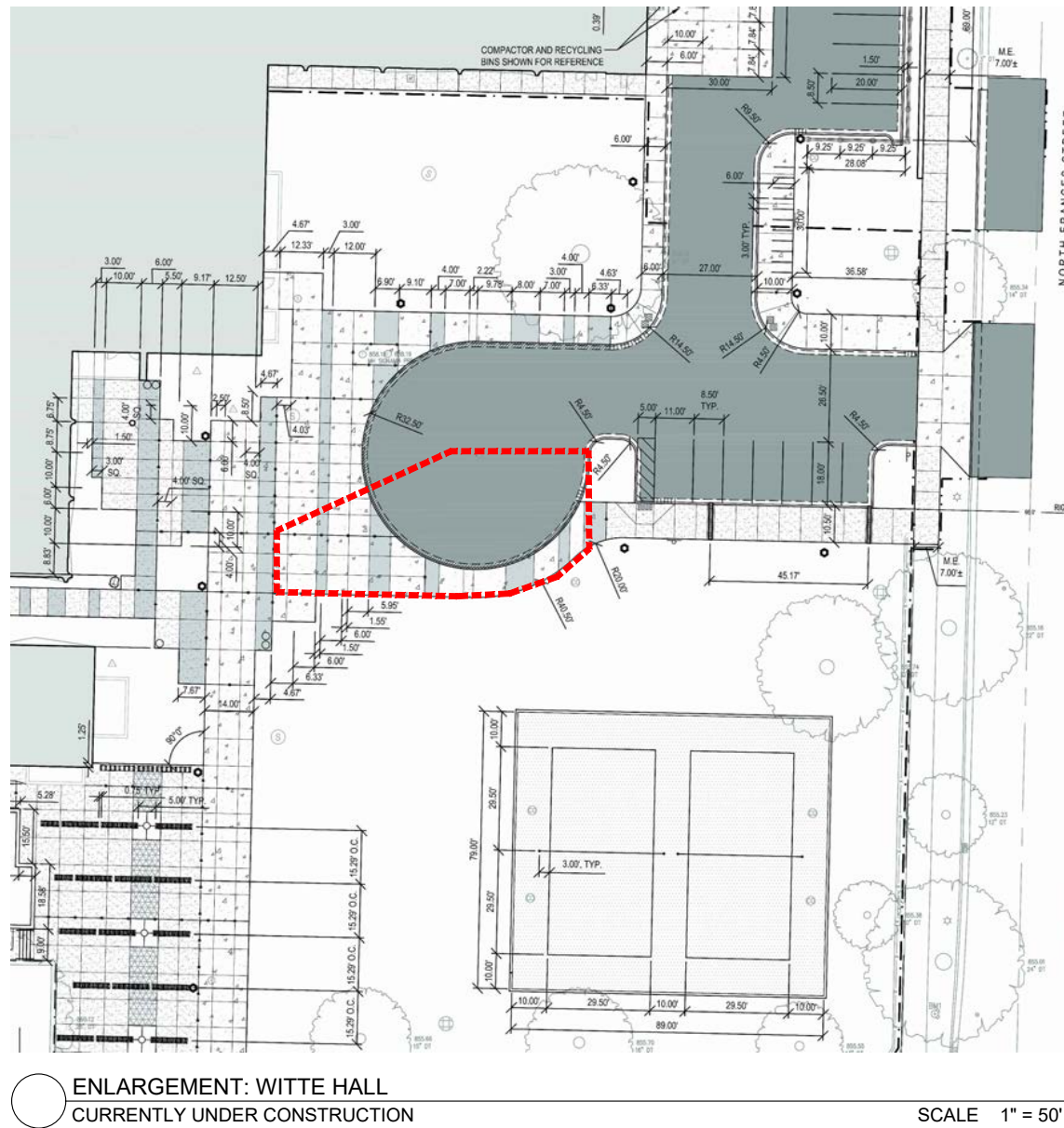
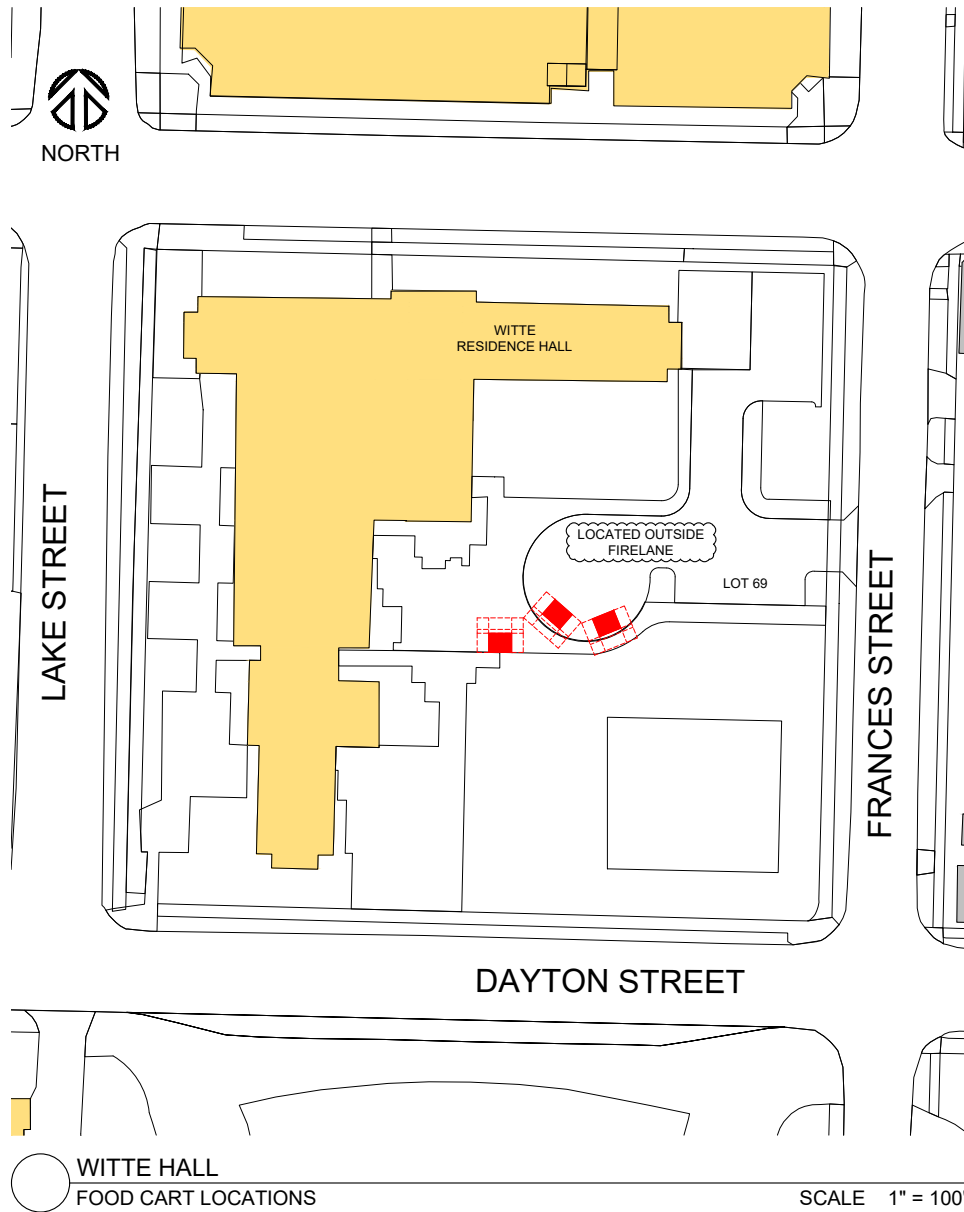
- Accepted date
- General guidelines
- Dimensional requirements
- Approved locations for special events
- Intake and approval process

**TYPICAL DIMENSIONS**



 <b>WISCONSIN</b> <b>UNIVERSITY OF WISCONSIN-MADISON</b>	Project: <b>FOOD CART LOCATIONS</b>		Designed By:		Date: 08-22-2022
			Drawn By: AJW		Scale:
	Drawing Title: Sellery Hall		O.S.M.:		Scale
	Building No.: 1245		Revision:	Date:	Sheet:
	File: P:\COMMON\PLANNING\FoodCarts		rev_0 05-30-19	rev_3 08-21-22	<b>L-11</b>
		rev_1 07-12-21			
FACILITIES PLANNING AND MANAGEMENT Campus Planning & Landscape Architecture		21 N. Park Street 6th Floor Madison, Wisconsin 53715-1211			





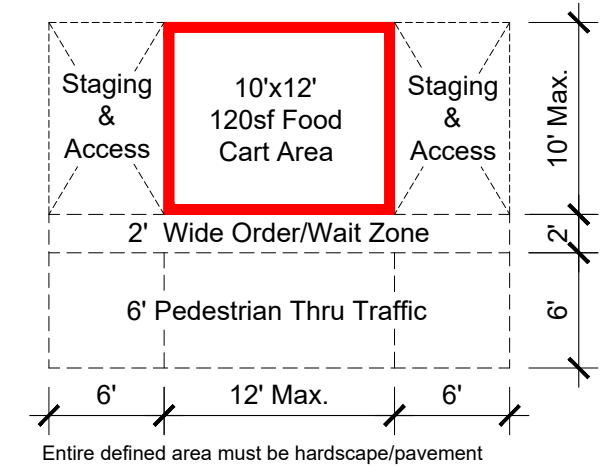
#### NOTES:


Refer to Food Cart Locations Key (Sheet L-00) for campus location and context.

Refer to UW-Madison Food Cart Policy (XXX.XX) for the following information:

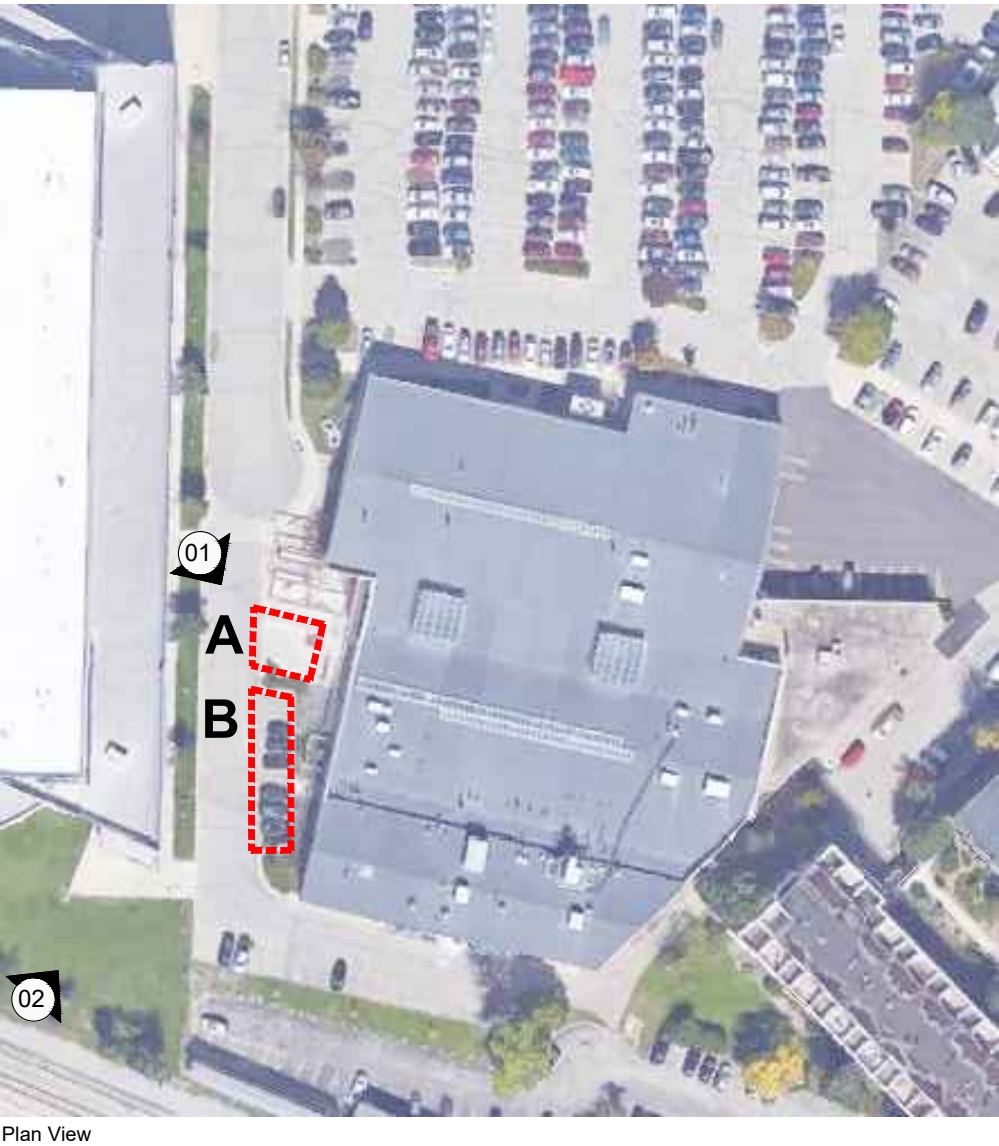
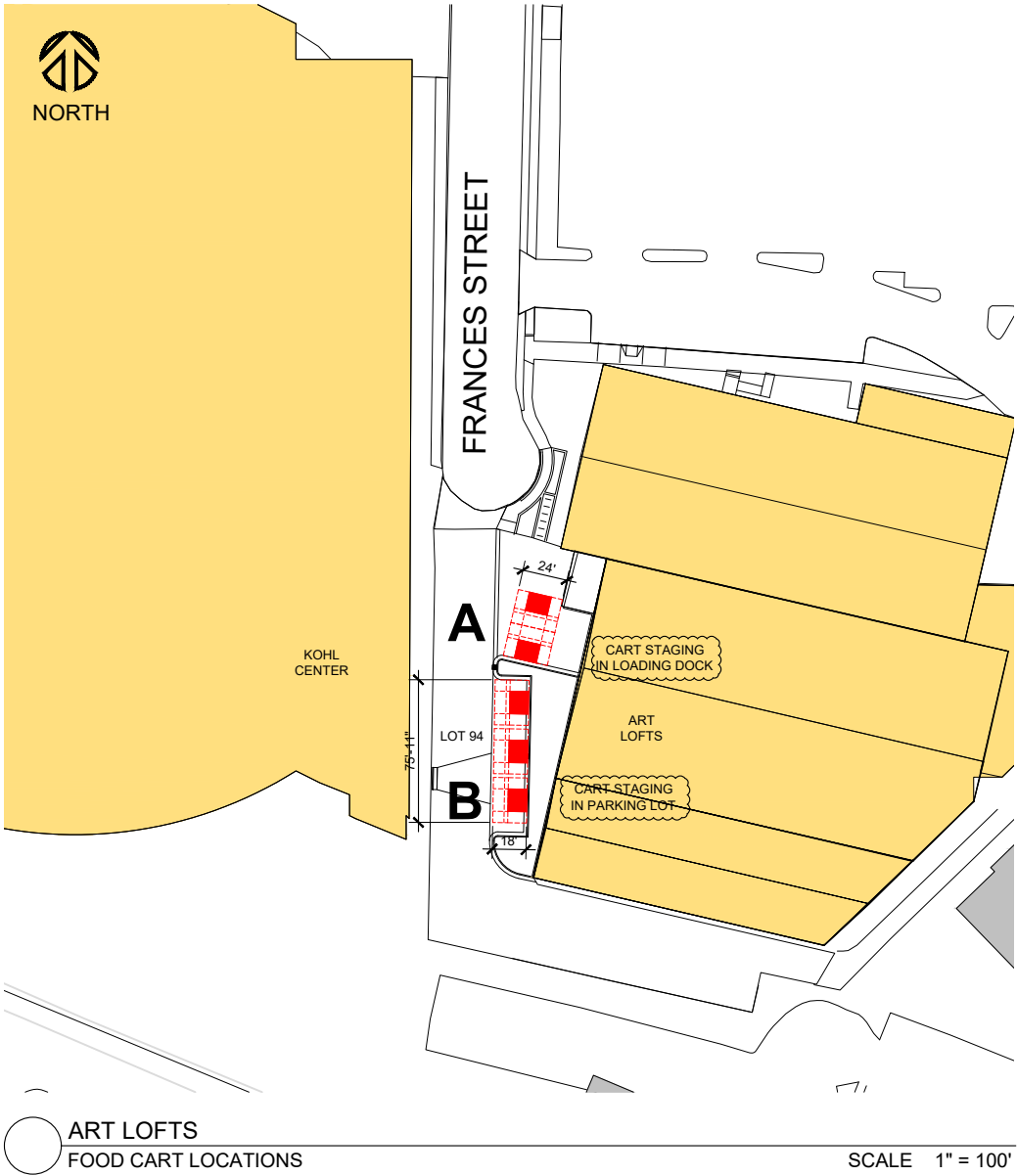
- Accepted date
- General guidelines
- Dimensional requirements
- Approved locations for special events
- Intake and approval process

#### TYPICAL DIMENSIONS



 <b>WISCONSIN</b> UNIVERSITY OF WISCONSIN-MADISON	Project:	<b>FOOD CART LOCATIONS</b>		Designed By:		Date: 08-22-2022
				Drawn By: AJW		Scale:
	Drawing Title:	Witte Hall		O.S.M.:		Scale
	Building No.:	1246		Revision:	Date:	Sheet:
	File:	P:\COMMON\PLANNING\FoodCarts		rev_0 05-30-19	rev_3 08-21-22	<b>L-12</b>
			rev_1 07-12-21			
	FACILITIES PLANNING AND MANAGEMENT Campus Planning & Landscape Architecture		21 N. Park Street 6th Floor Madison, Wisconsin 53715-1211			



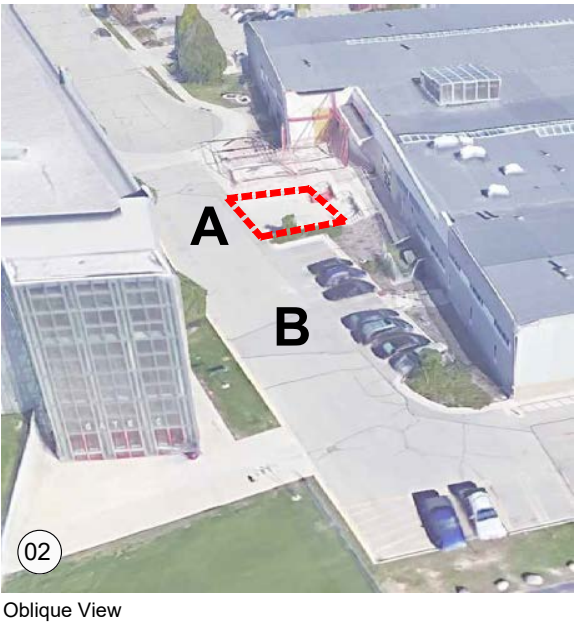
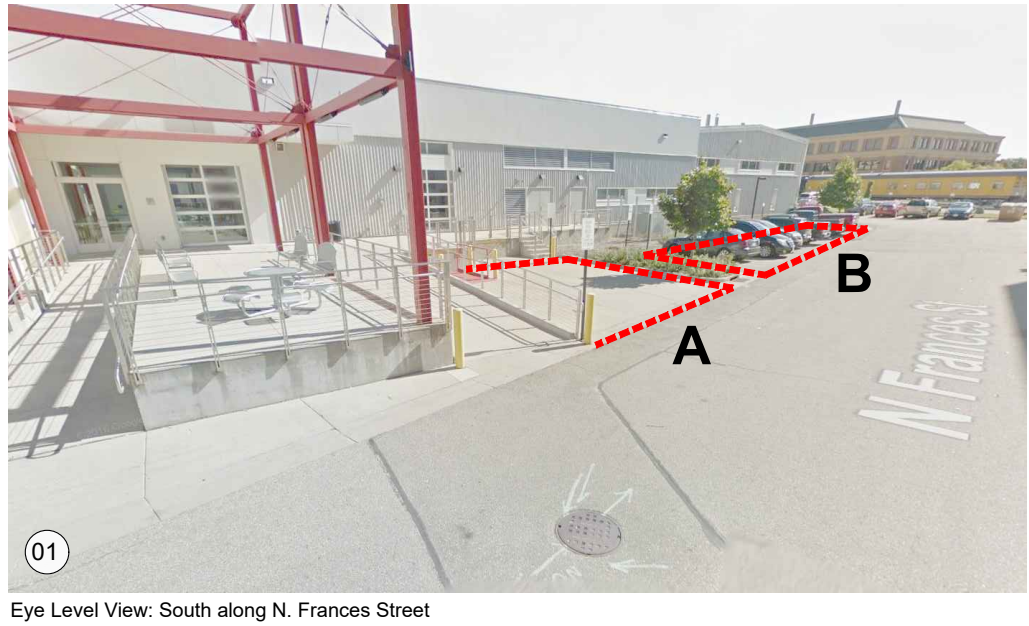
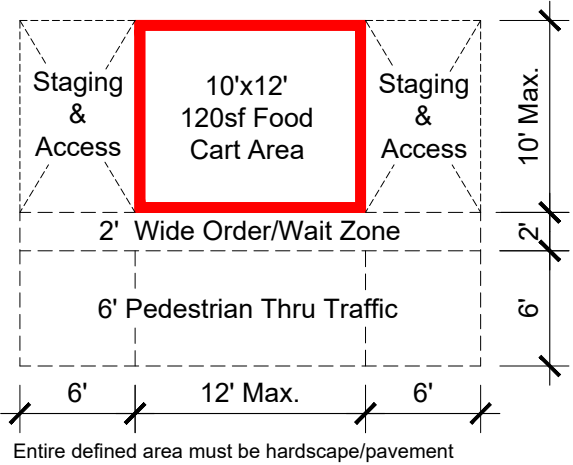



**NOTES:**  
Refer to Food Cart Locations Key (Sheet L-00) for campus location and context.

Refer to UW-Madison Food Cart Policy (XXX.XX) for the following information:

- Accepted date
- General guidelines
- Dimensional requirements
- Approved locations for special events
- Intake and approval process

**TYPICAL DIMENSIONS**



 <b>WISCONSIN</b> <b>UNIVERSITY OF WISCONSIN-MADISON</b>	Project:	<b>FOOD CART LOCATIONS</b>		Designed By:		Date:	08-22-2022
				Drawn By:		AJW	Scale:
	Drawing Title:	Art Lofts		O.S.M.:		Scale	
	Building No.:	0220		Revision:	Date:	Sheet:	
	File:	P:\COMMON\PLANNING\FoodCarts		rev_0 05-30-19	rev_3 08-21-22	<b>L-13</b>	
			rev_1 07-12-21				
	FACILITIES PLANNING AND MANAGEMENT Campus Planning & Landscape Architecture		21 N. Park Street 6th Floor Madison, Wisconsin 53715-1211				